

## ATG5 antibody

Cat. No. GTX31770

Host	Rabbit
Clonality	Polyclonal
Isotype	IgG
Application	WB, ICC/IF, IHC-P, ELISA
Reactivity	Human, Mouse, Rat

Package  
100 µg

## APPLICATION

## Application Note

\*Optimal dilutions/concentrations should be determined by the researcher.

Suggested dilution	Recommended dilution
WB	1 - 2 µg/mL
ICC/IF	Assay dependent
IHC-P	2.5 µg/mL
ELISA	Assay dependent

Not tested in other applications.

Calculated MW	32 kDa. ( <a href="#">Note</a> )
Product Note	Three isoforms of ATG5 are known to exist; this ATG5 antibody will only detect the longest isoform.

## PROPERTIES

Form	Liquid
Buffer	PBS
Preservative	0.02% Sodium azide
Storage	Store as concentrated solution. Centrifuge briefly prior to opening vial. For short-term storage (1-2 weeks), store at 4°C. For long-term storage, aliquot and store at -20°C or below. Avoid multiple freeze-thaw cycles.
Concentration	1 mg/ml (Please refer to the vial label for the specific concentration.)
Immunogen	ATG5 antibody was raised against a 16 amino acid synthetic peptide from near the amino terminus of human ATG5. The immunogen is located within the first 50 amino acids of ATG5.
Purification	Purified by antigen-affinity chromatography
Conjugation	Unconjugated



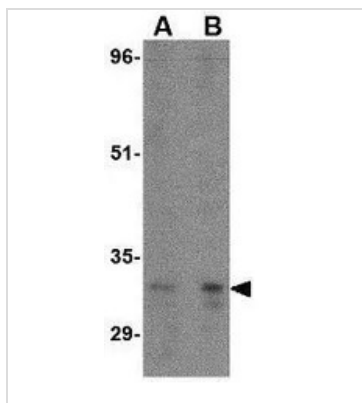
For full product information, images and publications, please visit our [website](#).

For laboratory research use only. Not for any clinical, therapeutic, or diagnostic use in humans or animals. Not for animal or human consumption.

## Note

Purchasers shall not, and agree not to enable third parties to, analyze, copy, reverse engineer or otherwise attempt to determine the structure or sequence of the product.

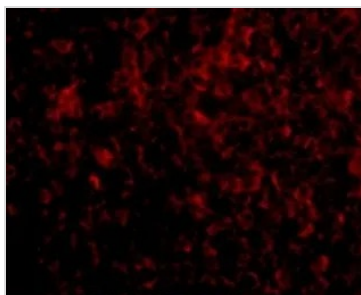
## DATA IMAGES



### GTx31770 WB Image

WB analysis of rat spleen tissue lysate using GTx31770 ATG5 antibody.

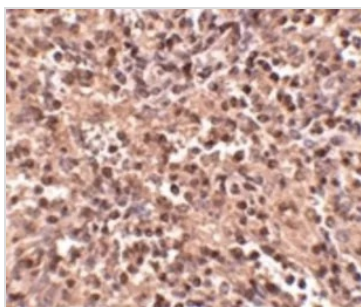
Working concentration : (A) 1 and (B) 2 µg/ml



### GTx31770 IHC-P Image

IHC-P analysis of human spleen tissue using GTx31770 ATG5 antibody.

Working concentration : 20 µg/ml



### GTx31770 IHC-P Image

IHC-P analysis of human spleen tissue using GTx31770 ATG5 antibody.

Working concentration : 2.5 µg/ml



For full product information, images and publications, please visit our [website](https://www.genetex.com).