

EFEMP1 antibody

Cat. No. GTX31792

Host	Rabbit
Clonality	Polyclonal
Isotype	IgG
Applications	WB, ICC/IF, ELISA
Reactivity	Human, Mouse, Rat

Package
100 µg

Applications

Application Note

*Optimal dilutions/concentrations should be determined by the researcher.

Suggested dilution	Recommended dilution
WB	0.5 - 1 µg/mL
ICC/IF	20 µg/mL
ELISA	Assay dependent

Not tested in other applications.

Calculated MW 55 kDa. ([Note](#))

Product Note At least three isoforms of Fibulin 3 are known to exist. This antibody is predicted to not cross-react with other Fibulin proteins.

Properties

Form	Liquid
Buffer	PBS
Preservative	0.02% Sodium azide
Storage	Store as concentrated solution. Centrifuge briefly prior to opening vial. For short-term storage (1-2 weeks), store at 4°C. For long-term storage, aliquot and store at -20°C or below. Avoid multiple freeze-thaw cycles.
Concentration	1 mg/ml (Please refer to the vial label for the specific concentration.)
Immunogen	Fibulin 3 antibody was raised against a 19 amino acid synthetic peptide near the carboxy terminus of human Fibulin 3. The immunogen is located within amino acids 410 - 460 of Fibulin 3.
Purification	Purified by antigen-affinity chromatography
Conjugation	Unconjugated



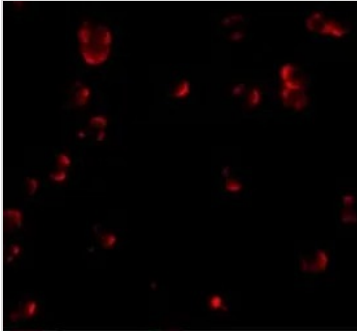
For full product information, images and publications, please visit our [website](#).

For laboratory research use only. Not for any clinical, therapeutic, or diagnostic use in humans or animals. Not for animal or human consumption.

Note

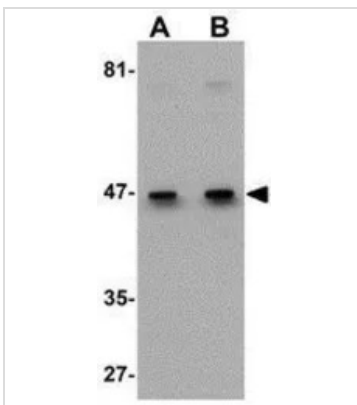
Purchasers shall not, and agree not to enable third parties to, analyze, copy, reverse engineer or otherwise attempt to determine the structure or sequence of the product.

DATA IMAGES



GTX31792 ICC/IF Image

ICC/IF analysis of HeLa cells using GTX31792 EFEMP1 antibody.
Working concentration : 20 µg/ml



GTX31792 WB Image

WB analysis of HeLa cell lysate using GTX31792 EFEMP1 antibody.
Working concentration : (A) 0.5 and (B) 1 µg/ml



GTX31792 ICC/IF Image

ICC/IF analysis of HeLa cells using GTX31792 EFEMP1 antibody.
Working concentration : 20 µg/ml



For full product information, images and publications, please visit our [website](#).