

NABC1 antibody

Cat. No. GTX31800

Host	Rabbit
Clonality	Polyclonal
Isotype	IgG
Applications	WB, IHC-P, ELISA
Reactivity	Human

Package

100 µg

Applications

Application Note

*Optimal dilutions/concentrations should be determined by the researcher.

Suggested dilution	Recommended dilution
WB	1 µg/mL
IHC-P	5 µg/mL
ELISA	Assay dependent

Not tested in other applications.

Calculated MW 62 kDa. ([Note](#))

Properties

Form	Liquid
Buffer	PBS
Preservative	0.02% Sodium azide
Storage	Store as concentrated solution. Centrifuge briefly prior to opening vial. Store at 4°C.
Concentration	1 mg/ml (Please refer to the vial label for the specific concentration.)
Immunogen	NABC1 antibody was raised against a 16 amino acid synthetic peptide near the carboxy terminus of human NABC1 .The immunogen is located within amino acids 460 - 510 of NABC1 .
Purification	Purified by antigen-affinity chromatography
Conjugation	Unconjugated

Note

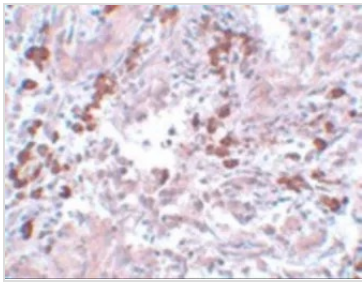
For laboratory research use only. Not for any clinical, therapeutic, or diagnostic use in humans or animals. Not for animal or human consumption.

Purchasers shall not, and agree not to enable third parties to, analyze, copy, reverse engineer or otherwise attempt to determine the structure or sequence of the product.



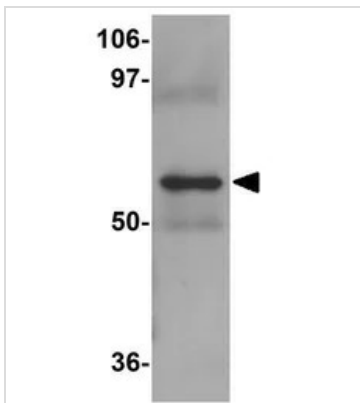
For full product information, images and publications, please visit our [website](#).

DATA IMAGES



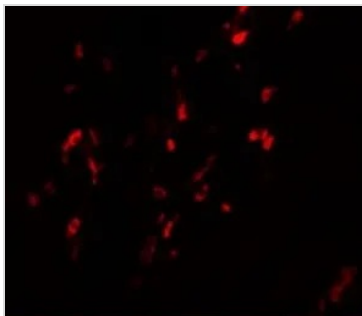
GTX31800 IHC-P Image

IHC-P analysis of human breast cancer tissue using GTX31800 NABC1 antibody.
Working concentration : 5 µg/ml



GTX31800 WB Image

WB analysis of human lung tissue lysate using GTX31800 NABC1 antibody.
Working concentration : 1 µg/ml



GTX31800 IHC-P Image

IHC-P analysis of human breast carcinoma tissue using GTX31800 NABC1 antibody.
Working concentration : 20 µg/ml



For full product information, images and publications, please visit our [website](#).