

## ZNF198 antibody

Cat. No. GTX31821

Host	Rabbit
Clonality	Polyclonal
Isotype	IgG
Applications	WB, ICC/IF, ELISA
Reactivity	Human, Mouse, Rat

References ( 2 )

Package

100 µg

## Applications

## Application Note

\*Optimal dilutions/concentrations should be determined by the researcher.

Suggested dilution	Recommended dilution
WB	0.125 - 0.25 µg/mL
ICC/IF	10 µg/mL
ELISA	Assay dependent

Not tested in other applications.

Calculated MW 155 kDa. ( [Note](#) )

**Product Note** At least two isoforms of ZMYM2 are known to exist; this antibody will detect only the shorter isoform. ZMYM2 antibody is predicted to not cross-react with other ZMYM protein family members.

## Properties

Form	Liquid
Buffer	PBS
Preservative	0.02% Sodium azide
Storage	Store as concentrated solution. Centrifuge briefly prior to opening vial. For short-term storage (1-2 weeks), store at 4°C. For long-term storage, aliquot and store at -20°C or below. Avoid multiple freeze-thaw cycles.
Concentration	1 mg/ml (Please refer to the vial label for the specific concentration.)
Immunogen	ZMYM2 antibody was raised against a 17 amino acid synthetic peptide near the amino terminus of human ZMYM2. The immunogen is located within amino acids 120 - 170 of ZMYM2.
Purification	Purified by antigen-affinity chromatography
Conjugation	Unconjugated



For full product information, images and publications, please visit our [website](#).

For laboratory research use only. Not for any clinical, therapeutic, or diagnostic use in humans or animals. Not for animal or human consumption.

**Note**

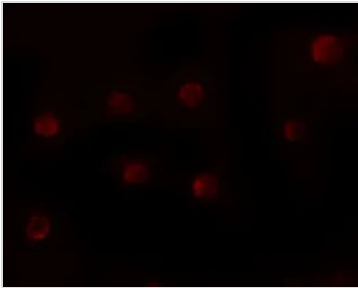
Purchasers shall not, and agree not to enable third parties to, analyze, copy, reverse engineer or otherwise attempt to determine the structure or sequence of the product.

## DATA IMAGES



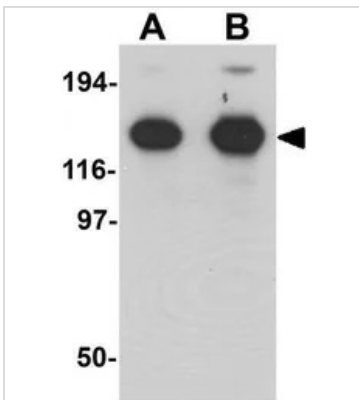
**GTX31821 ICC/IF Image**

ICC/IF analysis of HeLa cells using GTX31821 ZNF198 antibody.  
Working concentration : 10 µg/ml



**GTX31821 ICC/IF Image**

ICC/IF analysis of HeLa cells using GTX31821 ZNF198 antibody.  
Working concentration : 20 µg/ml



**GTX31821 WB Image**

WB analysis of EL4 cell lysate using GTX31821 ZNF198 antibody.  
Working concentration : (A) 0.125 and (B) 0.25 µg/ml



For full product information, images and publications, please visit our [website](#).