

## Axin 2 antibody

Cat. No. GTX31822

Host	Rabbit
Clonality	Polyclonal
Isotype	IgG
Applications	WB, ICC/IF, IHC-P, ELISA
Reactivity	Human, Mouse, Rat

References ( 1 )

Package

100 µg

## Applications

## Application Note

\*Optimal dilutions/concentrations should be determined by the researcher.

Suggested dilution	Recommended dilution
WB	1 µg/mL
ICC/IF	Assay dependent
IHC-P	5 µg/mL
ELISA	Assay dependent

Not tested in other applications.

**Calculated MW** 94 kDa. ( [Note](#) )

**Product Note** AXIN2 antibody is predicted to not cross-react with AXIN1. At least four isoforms of AXIN2 are known to exist; this antibody will recognize all four.

## Properties

Form	Liquid
Buffer	PBS
Preservative	0.02% Sodium azide
Storage	Store as concentrated solution. Centrifuge briefly prior to opening vial. For short-term storage (1-2 weeks), store at 4°C. For long-term storage, aliquot and store at -20°C or below. Avoid multiple freeze-thaw cycles.
Concentration	1 mg/ml (Please refer to the vial label for the specific concentration.)
Immunogen	ZMYM3 antibody was raised against a 20 amino acid synthetic peptide near the carboxy terminus of human ZMYM3. The immunogen is located within amino acids 780 - 830 of ZMYM3.
Purification	Purified by antigen-affinity chromatography
Conjugation	Unconjugated



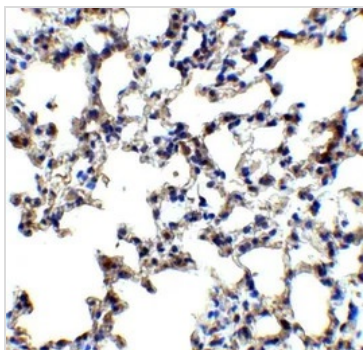
For full product information, images and publications, please visit our [website](#).

For laboratory research use only. Not for any clinical, therapeutic, or diagnostic use in humans or animals. Not for animal or human consumption.

## Note

Purchasers shall not, and agree not to enable third parties to, analyze, copy, reverse engineer or otherwise attempt to determine the structure or sequence of the product.

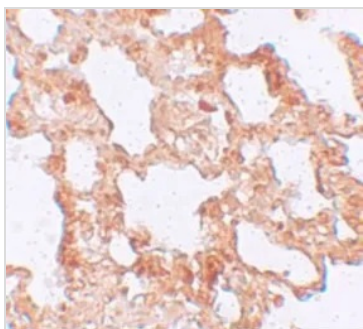
## DATA IMAGES



### GTX31822 IHC-P Image

IHC-P analysis of mouse lung tissue using GTX31822 Axin 2 antibody.

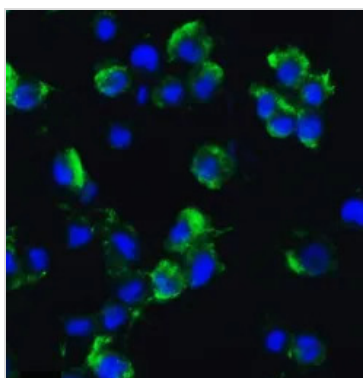
Working concentration : 5 µg/ml



### GTX31822 IHC-P Image

IHC-P analysis of rat lung tissue using GTX31822 Axin 2 antibody.

Working concentration : 5 µg/ml



### GTX31822 ICC/IF Image

ICC/IF analysis of HepG2 cells using GTX31822 Axin 2 antibody.

Dilution : 20 µg/ml



For full product information, images and publications, please visit our [website](#).