

## ESRP2 antibody

Cat. No. GTX31826

Host	Rabbit
Clonality	Polyclonal
Isotype	IgG
Applications	WB, IHC-P, ELISA
Reactivity	Human, Mouse

References ( 1 )

Package

100 µg

## Applications

## Application Note

\*Optimal dilutions/concentrations should be determined by the researcher.

Suggested dilution	Recommended dilution
WB	1 µg/mL
IHC-P	5 µg/mL
ELISA	Assay dependent

Not tested in other applications.

Calculated MW 78 kDa. ( [Note](#) )

**Product Note** This antibody is predicted to not cross-react with other RBM35/ESRP family members. At least three isoforms are known to exist; this antibody will detect all three.

## Properties

Form	Liquid
Buffer	PBS
Preservative	0.02% Sodium azide
Storage	Store as concentrated solution. Centrifuge briefly prior to opening vial. For short-term storage (1-2 weeks), store at 4°C. For long-term storage, aliquot and store at -20°C or below. Avoid multiple freeze-thaw cycles.
Concentration	1 mg/ml (Please refer to the vial label for the specific concentration.)
Immunogen	ESRP2 antibody was raised against a 17 amino acid synthetic peptide near the carboxy terminus of human ESRP2. The immunogen is located within the last 50 amino acids of ESRP2.
Purification	Purified by antigen-affinity chromatography
Conjugation	Unconjugated



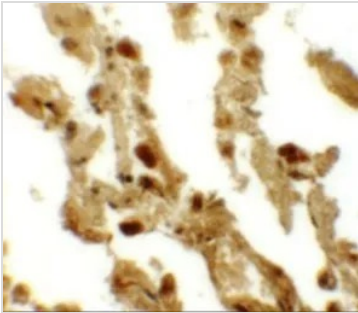
For full product information, images and publications, please visit our [website](#).

For laboratory research use only. Not for any clinical, therapeutic, or diagnostic use in humans or animals. Not for animal or human consumption.

**Note**

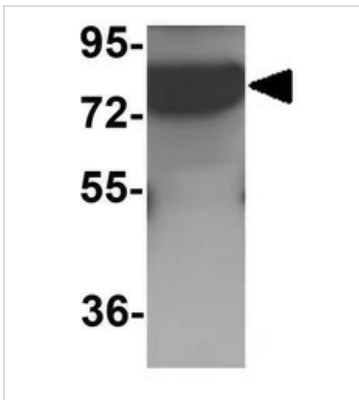
Purchasers shall not, and agree not to enable third parties to, analyze, copy, reverse engineer or otherwise attempt to determine the structure or sequence of the product.

## DATA IMAGES



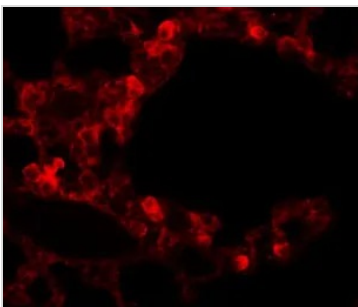
**GTX31826 IHC-P Image**

IHC-P analysis of human lung tissue using GTX31826 ESRP2 antibody.  
Working concentration : 5 µg/ml



**GTX31826 WB Image**

WB analysis of human lung tissue lysate using GTX31826 ESRP2 antibody.  
Working concentration : 1 µg/ml



**GTX31826 IHC-P Image**

IHC-P analysis of human lung tissue using GTX31826 ESRP2 antibody.  
Working concentration : 20 µg/ml



For full product information, images and publications, please visit our [website](https://www.genetex.com).