

## ZMIZ2 antibody

Cat. No. GTX31831

Host	Rabbit
Clonality	Polyclonal
Isotype	IgG
Applications	WB, ELISA
Reactivity	Human, Mouse

References ( 1 )

Package

100 µg

## Applications

## Application Note

\*Optimal dilutions/concentrations should be determined by the researcher.

Suggested dilution	Recommended dilution
WB	0.25 - 0.5 µg/mL
ELISA	Assay dependent

Not tested in other applications.

**Calculated MW** 97 kDa. ( [Note](#) )

**Product Note** At least four isoforms are known to exist. This antibody is predicted to not cross-react with other PIAS protein family members.

## Properties

Form	Liquid
Buffer	PBS
Preservative	0.02% Sodium azide
Storage	Store as concentrated solution. Centrifuge briefly prior to opening vial. For short-term storage (1-2 weeks), store at 4°C. For long-term storage, aliquot and store at -20°C or below. Avoid multiple freeze-thaw cycles.
Concentration	1 mg/ml (Please refer to the vial label for the specific concentration.)
Immunogen	ZIMP7 antibody was raised against a 17 amino acid synthetic peptide near the center of human ZIMP7. The immunogen is located within amino acids 270 - 320 of ZIMP7.
Purification	Purified by antigen-affinity chromatography
Conjugation	Unconjugated



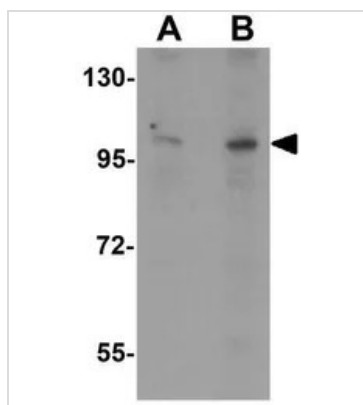
For full product information, images and publications, please visit our [website](#).

For laboratory research use only. Not for any clinical, therapeutic, or diagnostic use in humans or animals. Not for animal or human consumption.

## Note

Purchasers shall not, and agree not to enable third parties to, analyze, copy, reverse engineer or otherwise attempt to determine the structure or sequence of the product.

## DATA IMAGES



### GTX31831 WB Image

WB analysis of A-20 cell lysate using GTX31831 ZMIZ2 antibody.

Working concentration : (A) 0.25 and (B) 0.5  $\mu\text{g/ml}$



For full product information, images and publications, please visit our [website](#).