

CD229 antibody

Cat. No. GTX31832

Host	Rabbit
Clonality	Polyclonal
Isotype	IgG
Applications	WB, ICC/IF, ELISA
Reactivity	Human, Mouse, Rat

Package
100 µg

Applications

Application Note

*Optimal dilutions/concentrations should be determined by the researcher.

Suggested dilution	Recommended dilution
WB	1 - 2 µg/mL
ICC/IF	10 µg/mL
ELISA	Assay dependent

Not tested in other applications.

Calculated MW 72 kDa. ([Note](#))

Product Note At least three isoforms of SLAMF3 are known to exist. SLAMF3 antibody is predicted to not cross-react with other SLAM protein family members.

Properties

Form	Liquid
Buffer	PBS
Preservative	0.02% Sodium azide
Storage	Store as concentrated solution. Centrifuge briefly prior to opening vial. For short-term storage (1-2 weeks), store at 4°C. For long-term storage, aliquot and store at -20°C or below. Avoid multiple freeze-thaw cycles.
Concentration	1 mg/ml (Please refer to the vial label for the specific concentration.)
Immunogen	CD229 antibody was raised against an 18 amino acid synthetic peptide near the carboxy terminus of human CD229. The immunogen is located within amino acids 520 - 570 of CD229.
Purification	Purified by antigen-affinity chromatography
Conjugation	Unconjugated



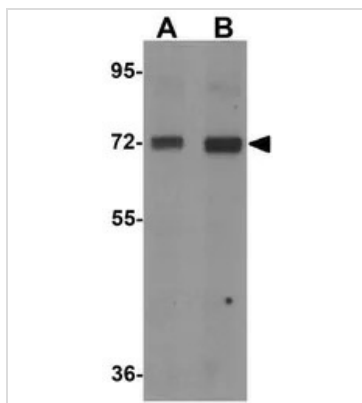
For full product information, images and publications, please visit our [website](#).

For laboratory research use only. Not for any clinical, therapeutic, or diagnostic use in humans or animals. Not for animal or human consumption.

Note

Purchasers shall not, and agree not to enable third parties to, analyze, copy, reverse engineer or otherwise attempt to determine the structure or sequence of the product.

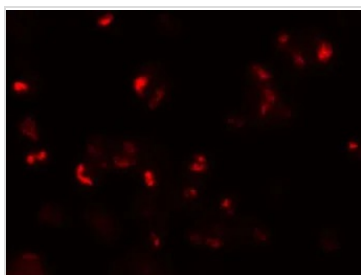
DATA IMAGES



GTx31832 WB Image

WB analysis of 293 cell lysate using GTx31832 CD229 antibody.

Working concentration : (A) 1 and (B) 2 µg/ml



GTx31832 ICC/IF Image

ICC/IF analysis of 293 cells using GTx31832 CD229 antibody.

Working concentration : 20 µg/ml



GTx31832 ICC/IF Image

ICC/IF analysis of 293 cells using GTx31832 CD229 antibody.

Working concentration : 10 µg/ml



For full product information, images and publications, please visit our [website](https://www.genetex.com).