

Protector-2 antibody

Cat. No. GTX31835

Host	Rabbit
Clonality	Polyclonal
Isotype	IgG
Applications	WB, ICC/IF, ELISA
Reactivity	Human, Mouse

Package
100 µg

Applications

Application Note

*Optimal dilutions/concentrations should be determined by the researcher.

Suggested dilution	Recommended dilution
WB	1 µg/mL
ICC/IF	10 µg/mL
ELISA	Assay dependent

Not tested in other applications.

Calculated MW 41 kDa. ([Note](#))

Product Note At least three isoforms are known to exist; this antibody will recognize only isoforms a and b. This antibody will not cross-react with PPR5.

Properties

Form	Liquid
Buffer	PBS
Preservative	0.02% Sodium azide
Storage	Store as concentrated solution. Centrifuge briefly prior to opening vial. For short-term storage (1-2 weeks), store at 4°C. For long-term storage, aliquot and store at -20°C or below. Avoid multiple freeze-thaw cycles.
Concentration	1 mg/ml (Please refer to the vial label for the specific concentration.)
Immunogen	FLJ14213 antibody was raised against a 17 amino acid synthetic peptide near the center of human FLJ14213. The immunogen is located within amino acids 220 - 270 of FLJ14213.
Purification	Purified by antigen-affinity chromatography
Conjugation	Unconjugated



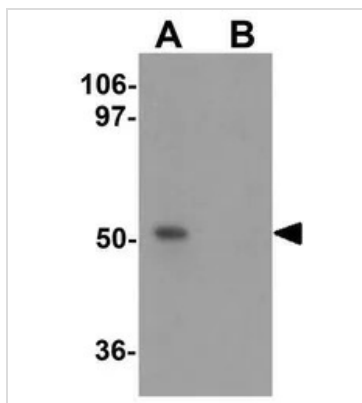
For full product information, images and publications, please visit our [website](#).

For laboratory research use only. Not for any clinical, therapeutic, or diagnostic use in humans or animals. Not for animal or human consumption.

Note

Purchasers shall not, and agree not to enable third parties to, analyze, copy, reverse engineer or otherwise attempt to determine the structure or sequence of the product.

DATA IMAGES



GTx31835 WB Image

WB analysis of 3T3 cell lysate in (A) the absence and (B) the presence of blocking peptide using GTx31835 Protor-2 antibody.

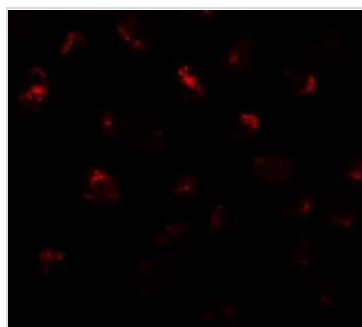
Working concentration : 1 µg/ml



GTx31835 ICC/IF Image

ICC/IF analysis of 293 cells using GTx31835 Protor-2 antibody.

Working concentration : 10 µg/ml



GTx31835 ICC/IF Image

ICC/IF analysis of 3T3 cells using GTx31835 Protor-2 antibody.

Working concentration : 20 µg/ml



For full product information, images and publications, please visit our [website](#).