

## ROCK1 antibody

Cat. No. GTX31836

Host	Rabbit
Clonality	Polyclonal
Isotype	IgG
Applications	WB, ICC/IF, ELISA
Reactivity	Human, Mouse, Rat

Package  
100 µg

## Applications

## Application Note

\*Optimal dilutions/concentrations should be determined by the researcher.

Suggested dilution	Recommended dilution
WB	1 µg/mL
ICC/IF	10 µg/mL
ELISA	Assay dependent

Not tested in other applications.

**Calculated MW** 158 kDa. ([Note](#))

**Product Note** ROCK1 antibody is predicted to not cross-react with other ROCK protein family members.

## Properties

Form	Liquid
Buffer	PBS
Preservative	0.02% Sodium azide
Storage	Store as concentrated solution. Centrifuge briefly prior to opening vial. For short-term storage (1-2 weeks), store at 4°C. For long-term storage, aliquot and store at -20°C or below. Avoid multiple freeze-thaw cycles.
Concentration	1 mg/ml (Please refer to the vial label for the specific concentration.)
Immunogen	ROCK1 antibody was raised against a 15 amino acid synthetic peptide near the amino terminus of human ROCK1. The immunogen is located within the first 50 amino acids of ROCK1.
Purification	Purified by antigen-affinity chromatography
Conjugation	Unconjugated

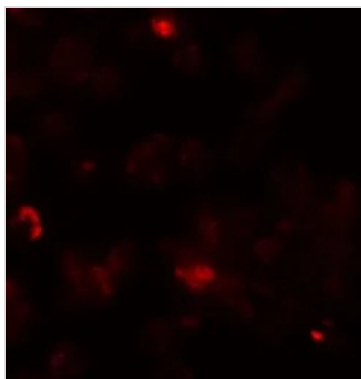


For full product information, images and publications, please visit our [website](#).

For laboratory research use only. Not for any clinical, therapeutic, or diagnostic use in humans or animals. Not for animal or human consumption.

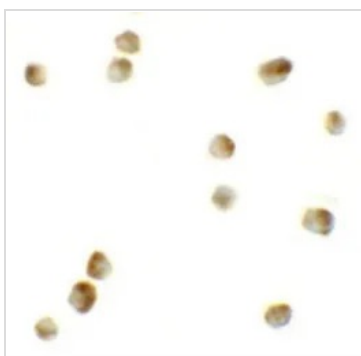
**Note**

Purchasers shall not, and agree not to enable third parties to, analyze, copy, reverse engineer or otherwise attempt to determine the structure or sequence of the product.

**DATA IMAGES**

**GTX31836 ICC/IF Image**

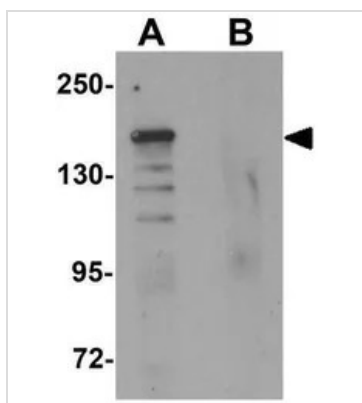
ICC/IF analysis of 293 cells using GTX31836 ROCK1 antibody.

Working concentration : 20 µg/ml


**GTX31836 ICC/IF Image**

ICC/IF analysis of 293 cells using GTX31836 ROCK1 antibody.

Working concentration : 10 µg/ml


**GTX31836 WB Image**

WB analysis of 293 cell lysate in (A) the absence and (B) the presence of blocking peptide using GTX31836 ROCK1 antibody.

Working concentration : 1 µg/ml



For full product information, images and publications, please visit our [website](#).