

AP3S1 antibody

Cat. No. GTX31839

Host	Rabbit
Clonality	Polyclonal
Isotype	IgG
Applications	WB, IHC-P, ELISA
Reactivity	Human, Mouse, Rat

Package
100 µg

Applications

Application Note

*Optimal dilutions/concentrations should be determined by the researcher.

Suggested dilution	Recommended dilution
WB	1 - 2 µg/mL
IHC-P	2.5 µg/mL
ELISA	Assay dependent

Not tested in other applications.

Calculated MW 22 kDa. ([Note](#))

Product Note At least three isoforms of AP3S1 are known to exist; this antibody will detect the two larger isoforms. AP3S1 antibody is predicted to not cross-react with other AP3 protein family members.

Properties

Form	Liquid
Buffer	PBS
Preservative	0.02% Sodium azide
Storage	Store as concentrated solution. Centrifuge briefly prior to opening vial. For short-term storage (1-2 weeks), store at 4°C. For long-term storage, aliquot and store at -20°C or below. Avoid multiple freeze-thaw cycles.
Concentration	1 mg/ml (Please refer to the vial label for the specific concentration.)
Immunogen	AP3S1 antibody was raised against a 19 amino acid synthetic peptide near the center of human AP3S1. The immunogen is located within the first 50 amino acids of AP3S1.
Purification	Purified by antigen-affinity chromatography
Conjugation	Unconjugated



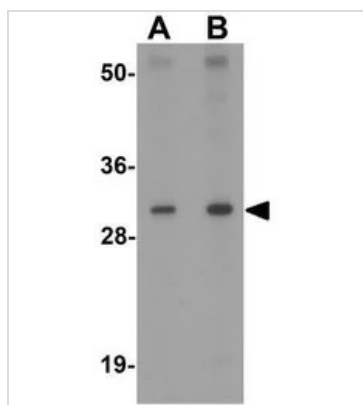
For full product information, images and publications, please visit our [website](#).

For laboratory research use only. Not for any clinical, therapeutic, or diagnostic use in humans or animals. Not for animal or human consumption.

Note

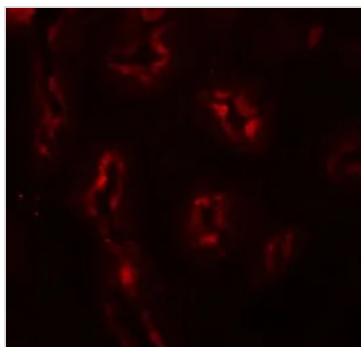
Purchasers shall not, and agree not to enable third parties to, analyze, copy, reverse engineer or otherwise attempt to determine the structure or sequence of the product.

DATA IMAGES

**GTX31839 WB Image**

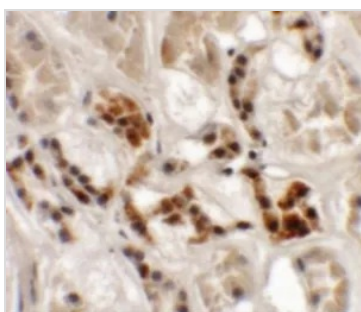
WB analysis of mouse kidney tissue lysate using GTX31839 AP3S1 antibody.

Working concentration : (A) 1 and (B) 2 $\mu\text{g/ml}$

**GTX31839 IHC-P Image**

IHC-P analysis of human kidney tissue using GTX31839 AP3S1 antibody.

Working concentration : 20 $\mu\text{g/ml}$

**GTX31839 IHC-P Image**

IHC-P analysis of human kidney tissue using GTX31839 AP3S1 antibody.

Working concentration : 2.5 $\mu\text{g/ml}$



For full product information, images and publications, please visit our [website](#).