

PHLPP1 antibody

Cat. No. GTX31861

Host	Rabbit
Clonality	Polyclonal
Isotype	IgG
Applications	WB, ICC/IF, ELISA
Reactivity	Human

Package
100 µg

Applications

Application Note

*Optimal dilutions/concentrations should be determined by the researcher.

Suggested dilution	Recommended dilution
WB	1 - 2 µg/mL
ICC/IF	Assay dependent
ELISA	Assay dependent

Not tested in other applications.

Calculated MW 185 kDa. ([Note](#))

Product Note At least four isoforms are known to exist; this antibody will only detect the largest isoform. PHLPP1 antibody is predicted to not cross react with PHLPP2.

Properties

Form	Liquid
Buffer	PBS
Preservative	0.02% Sodium azide
Storage	Store as concentrated solution. Centrifuge briefly prior to opening vial. For short-term storage (1-2 weeks), store at 4°C. For long-term storage, aliquot and store at -20°C or below. Avoid multiple freeze-thaw cycles.
Concentration	1 mg/ml (Please refer to the vial label for the specific concentration.)
Immunogen	PHLPP1 antibody was raised against an 18 amino acid synthetic peptide near the amino terminus of human PHLPP1. The immunogen is located within amino acids 250 - 300 of PHLPP1.
Purification	Purified by antigen-affinity chromatography
Conjugation	Unconjugated



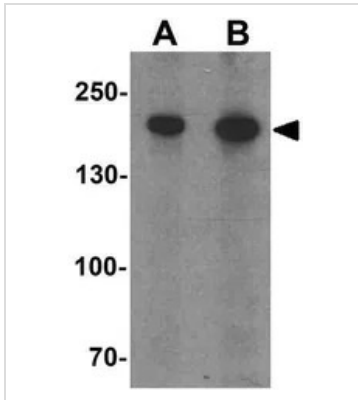
For full product information, images and publications, please visit our [website](#).

For laboratory research use only. Not for any clinical, therapeutic, or diagnostic use in humans or animals. Not for animal or human consumption.

Note

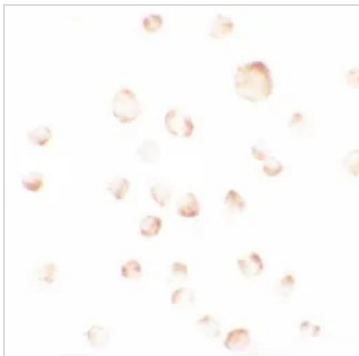
Purchasers shall not, and agree not to enable third parties to, analyze, copy, reverse engineer or otherwise attempt to determine the structure or sequence of the product.

DATA IMAGES



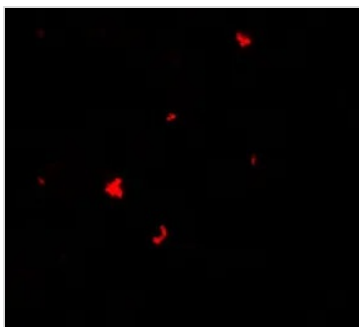
GTX31861 WB Image

WB analysis of SW480 cell lysate using GTX31861 PHLPP1 antibody.
Working concentration : (A) 1 and (B) 2 µg/ml



GTX31861 ICC/IF Image

ICC/IF analysis of SW480 cells using GTX31861 PHLPP1 antibody.
Working concentration : 2.5 µg/ml



GTX31861 ICC/IF Image

ICC/IF analysis of SW480 cells using GTX31861 PHLPP1 antibody.
Working concentration : 5 µg/ml



For full product information, images and publications, please visit our [website](https://www.genetex.com).