

KEAP1 antibody

Cat. No. GTX31864

Host	Rabbit
Clonality	Polyclonal
Isotype	IgG
Applications	WB, IHC-P, ELISA
Reactivity	Human, Mouse, Rat

References (2)

Package

100 µg

Applications

Application Note

*Optimal dilutions/concentrations should be determined by the researcher.

Suggested dilution	Recommended dilution
WB	1 - 2 µg/mL
IHC-P	Assay dependent
ELISA	Assay dependent

Not tested in other applications.

Calculated MW 70 kDa. ([Note](#))

Properties

Form	Liquid
Buffer	PBS
Preservative	0.02% Sodium azide
Storage	Store as concentrated solution. Centrifuge briefly prior to opening vial. For short-term storage (1-2 weeks), store at 4°C. For long-term storage, aliquot and store at -20°C or below. Avoid multiple freeze-thaw cycles.
Concentration	1 mg/ml (Please refer to the vial label for the specific concentration.)
Immunogen	KEAP1 antibody was raised against a 19 amino acid synthetic peptide near the carboxy terminus of human KEAP1. The immunogen is located within the last 50 amino acids of KEAP1.
Purification	Purified by antigen-affinity chromatography
Conjugation	Unconjugated

Note

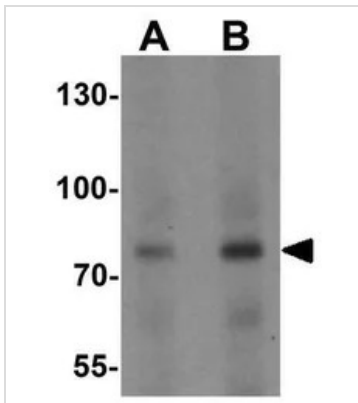
For laboratory research use only. Not for any clinical, therapeutic, or diagnostic use in humans or animals. Not for animal or human consumption.

Purchasers shall not, and agree not to enable third parties to, analyze, copy, reverse engineer or otherwise attempt to determine the structure or sequence of the product.



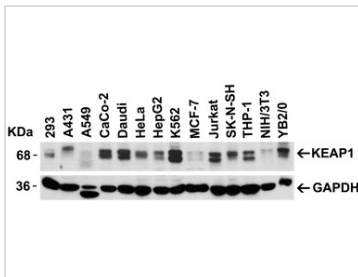
For full product information, images and publications, please visit our [website](#).

DATA IMAGES



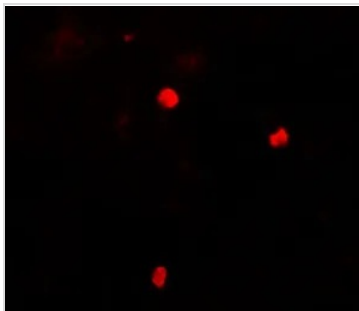
GTX31864 WB Image

WB analysis of human lung tissue lysate using GTX31864 KEAP1 antibody.
Working concentration : (A) 1 and (B) 2 µg/ml



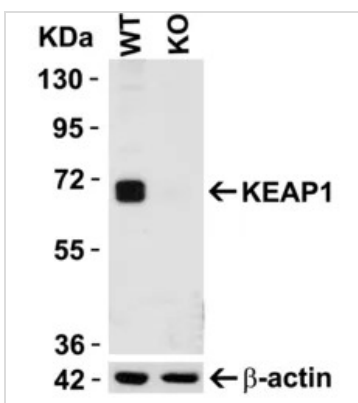
GTX31864 WB Image

WB analysis of various sample lysates using GTX31864 KEAP1 antibody.
Loading : 15µg of lysates per lane
Dilution : 2 µg/ml



GTX31864 IHC-P Image

IHC-P analysis of human lung tissue using GTX31864 KEAP1 antibody.
Working concentration : 20 µg/ml



GTX31864 WB Image

WB analysis of HeLa cell or KEAP1 KO cell lysates using GTX30005 KEAP1 antibody.
Dilution : 2µg/mL
Loading : 10µg



For full product information, images and publications, please visit our [website](https://www.genetex.com).