

FOXA2 antibody

Cat. No. GTX31875

Host	Rabbit
Clonality	Polyclonal
Isotype	IgG
Applications	WB, IHC-P, ELISA
Reactivity	Human, Mouse

Package
100 µg

Applications

Application Note

*Optimal dilutions/concentrations should be determined by the researcher.

Suggested dilution	Recommended dilution
WB	1 µg/mL
IHC-P	5 µg/mL
ELISA	Assay dependent

Not tested in other applications.

Calculated MW 48 kDa. ([Note](#))

Product Note At least two isoforms of FOXA2 are known to exist; this antibody will detect both isoforms. FOXA2 antibody is predicted to not cross-react with other members of the FOXA protein family.

Properties

Form	Liquid
Buffer	PBS
Preservative	0.02% Sodium azide
Storage	Store as concentrated solution. Centrifuge briefly prior to opening vial. For short-term storage (1-2 weeks), store at 4°C. For long-term storage, aliquot and store at -20°C or below. Avoid multiple freeze-thaw cycles.
Concentration	1 mg/ml (Please refer to the vial label for the specific concentration.)
Immunogen	FOXA2 antibody was raised against a 16 amino acid peptide near the center of human FOXA2 .The immunogen is located within amino acids 280 - 330 of FOXA2.
Purification	Purified by antigen-affinity chromatography
Conjugation	Unconjugated



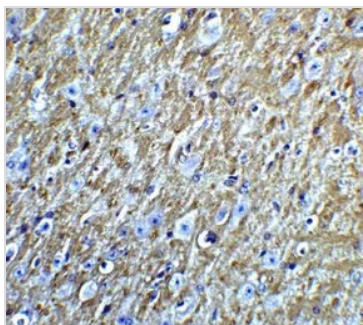
For full product information, images and publications, please visit our [website](#).

For laboratory research use only. Not for any clinical, therapeutic, or diagnostic use in humans or animals. Not for animal or human consumption.

Note

Purchasers shall not, and agree not to enable third parties to, analyze, copy, reverse engineer or otherwise attempt to determine the structure or sequence of the product.

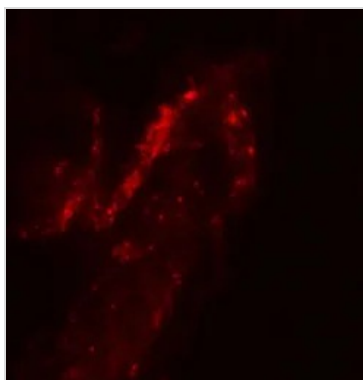
DATA IMAGES



GTX31875 IHC-P Image

IHC-P analysis of mouse brain tissue using GTX31875 FOXA2 antibody.

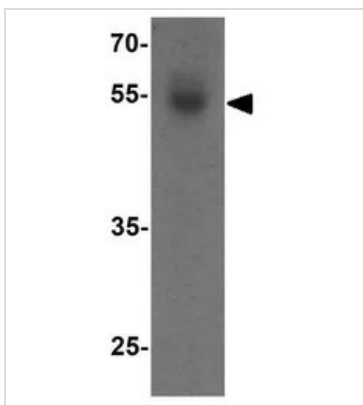
Working concentration : 5 µg/ml



GTX31875 IHC-P Image

IHC-P analysis of human bladder tissue using GTX31875 FOXA2 antibody.

Working concentration : 20 µg/ml



GTX31875 WB Image

WB analysis of human bladder tissue lysate using GTX31875 FOXA2 antibody.

Working concentration : 1 µg/ml



For full product information, images and publications, please visit our [website](#).