

# Kallikrein 4 antibody

**Cat. No. GTX31887**

<b>Host</b>	Rabbit
<b>Clonality</b>	Polyclonal
<b>Isotype</b>	IgG
<b>Applications</b>	WB, IHC-P, ELISA
<b>Reactivity</b>	Human

**Package**  
100 µg

## Applications

### Application Note

\*Optimal dilutions/concentrations should be determined by the researcher.

Suggested dilution	Recommended dilution
WB	1 - 2 µg/mL
IHC-P	Assay dependent
ELISA	Assay dependent

Not tested in other applications.

**Calculated MW** 27 kDa. ( [Note](#) )

**Product Note** KLK4 antibody is human specific. At least three isoforms of KLK4 are known to exist.

## Properties

<b>Form</b>	Liquid
<b>Buffer</b>	PBS
<b>Preservative</b>	0.02% Sodium azide
<b>Storage</b>	Store as concentrated solution. Centrifuge briefly prior to opening vial. For short-term storage (1-2 weeks), store at 4°C. For long-term storage, aliquot and store at -20°C or below. Avoid multiple freeze-thaw cycles.
<b>Concentration</b>	1 mg/ml (Please refer to the vial label for the specific concentration.)
<b>Immunogen</b>	KLK4 antibody was raised against a 15 amino acid peptide near the center of human KLK4. The immunogen is located within amino acids 80 - 130 of KLK4 .
<b>Purification</b>	Purified by antigen-affinity chromatography
<b>Conjugation</b>	Unconjugated

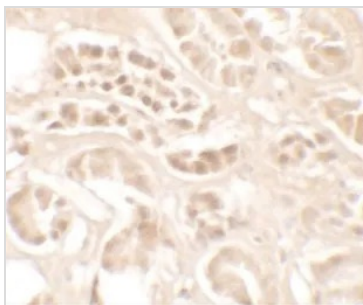


For full product information, images and publications, please visit our [website](#).

For laboratory research use only. Not for any clinical, therapeutic, or diagnostic use in humans or animals. Not for animal or human consumption.

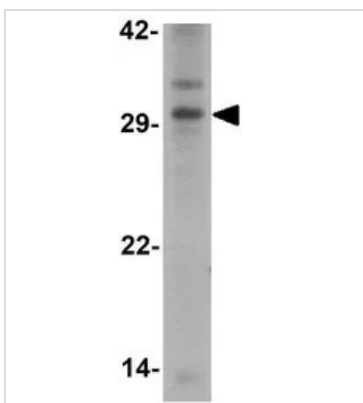
**Note**

Purchasers shall not, and agree not to enable third parties to, analyze, copy, reverse engineer or otherwise attempt to determine the structure or sequence of the product.

**DATA IMAGES**

**GTX31887 IHC-P Image**

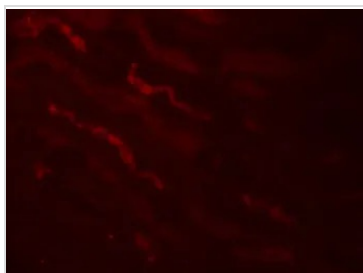
IHC-P analysis of human kidney tissue using GTX31887 Kallikrein 4 antibody.

Working concentration : 5 µg/ml


**GTX31887 WB Image**

WB analysis of human kidney tissue lysate using GTX31887 Kallikrein 4 antibody.

Working concentration : 1 µg/ml


**GTX31887 IHC-P Image**

IHC-P analysis of human kidney tissue using GTX31887 Kallikrein 4 antibody.

Working concentration : 20 µg/ml



For full product information, images and publications, please visit our [website](https://www.genetex.com).