

IL28B antibody

Cat. No. GTX31893

Host	Rabbit
Clonality	Polyclonal
Isotype	IgG
Applications	WB, ICC/IF, ELISA
Reactivity	Human

Package
100 µg

Applications

Application Note

*Optimal dilutions/concentrations should be determined by the researcher.

Suggested dilution	Recommended dilution
WB	1 - 2 µg/mL
ICC/IF	Assay dependent
ELISA	Assay dependent

Not tested in other applications.

Calculated MW	22 kDa. (Note)
Product Note	IL-28B antibody is human specific. IL-28B antibody may cross-react with IL-28A and IL-29.

Properties

Form	Liquid
Buffer	PBS
Preservative	0.02% Sodium azide
Storage	Store as concentrated solution. Centrifuge briefly prior to opening vial. For short-term storage (1-2 weeks), store at 4°C. For long-term storage, aliquot and store at -20°C or below. Avoid multiple freeze-thaw cycles.
Concentration	1 mg/ml (Please refer to the vial label for the specific concentration.)
Immunogen	IL-28B antibody was raised against a 17 amino acid peptide near the center of human IL-28B. The immunogen is located within amino acids 120 - 170 of IL-28B.
Purification	Purified by antigen-affinity chromatography
Conjugation	Unconjugated

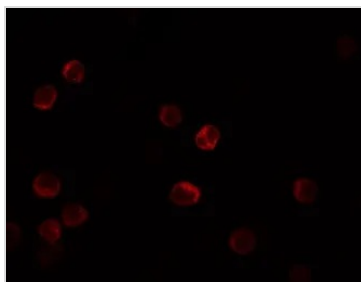


For full product information, images and publications, please visit our [website](#).

For laboratory research use only. Not for any clinical, therapeutic, or diagnostic use in humans or animals. Not for animal or human consumption.

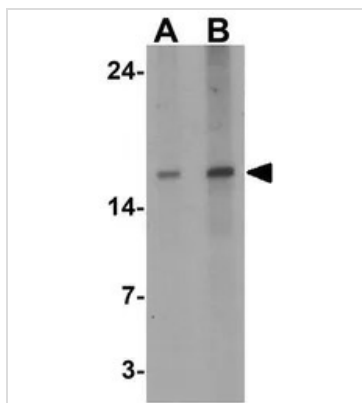
Note

Purchasers shall not, and agree not to enable third parties to, analyze, copy, reverse engineer or otherwise attempt to determine the structure or sequence of the product.

DATA IMAGES

GTX31893 ICC/IF Image

ICC/IF analysis of HeLa cells using GTX31893 IL28B antibody.

Working concentration : 5 µg/ml


GTX31893 WB Image

WB analysis of HeLa cell lysate using GTX31893 IL28B antibody.

Working concentration : (A) 1 and (B) 2 µg/ml



For full product information, images and publications, please visit our [website](https://www.genetex.com).