

## HMGB1 antibody

Cat. No. GTX31912

Host	Rabbit
Clonality	Polyclonal
Isotype	IgG
Applications	WB, IHC-P, ELISA
Reactivity	Human, Mouse, Rat

Package  
100 µg

## Applications

## Application Note

\*Optimal dilutions/concentrations should be determined by the researcher.

Suggested dilution	Recommended dilution
WB	1 - 2 µg/mL
IHC-P	5 µg/mL
ELISA	Assay dependent

Not tested in other applications.

Calculated MW 25 kDa. ( [Note](#) )

## Properties

Form	Liquid
Buffer	PBS
Preservative	0.02% Sodium azide
Storage	Store as concentrated solution. Centrifuge briefly prior to opening vial. Store at 4°C.
Concentration	1 mg/ml (Please refer to the vial label for the specific concentration.)
Immunogen	HMGB1 antibody was raised against a 19 amino acid peptide near the center of human HMGB1. The immunogen is located within amino acids 70 - 120 of HMGB1.
Purification	Purified by antigen-affinity chromatography
Conjugation	Unconjugated

## Note

For laboratory research use only. Not for any clinical, therapeutic, or diagnostic use in humans or animals. Not for animal or human consumption.

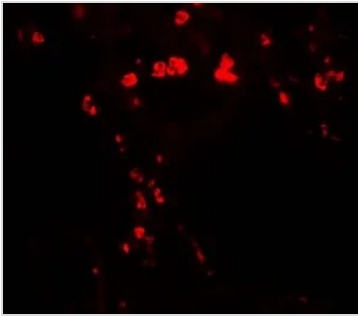
Purchasers shall not, and agree not to enable third parties to, analyze, copy, reverse engineer or otherwise attempt to determine the structure or sequence of the product.



For full product information, images and publications, please visit our [website](#).

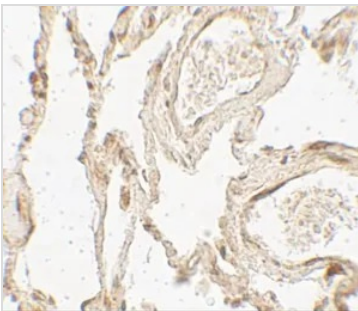
Date 2026 / 02 / 09 Page 1 of 2

## DATA IMAGES



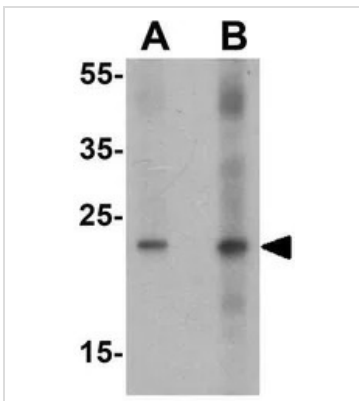
### GTX31912 IHC-P Image

IHC-P analysis of human lung tissue using GTX31912 HMGB1 antibody.  
Working concentration : 20 µg/ml



### GTX31912 IHC-P Image

IHC-P analysis of human lung tissue using GTX31912 HMGB1 antibody.  
Working concentration : 5 µg/ml



### GTX31912 WB Image

WB analysis of human brain tissue lysate using GTX31912 HMGB1 antibody.  
Working concentration : (A) 1 and (B) 2 µg/ml



For full product information, images and publications, please visit our [website](#).