

PGC1 alpha antibody

Cat. No. GTX31921

Host	Rabbit
Clonality	Polyclonal
Isotype	IgG
Applications	WB, ICC/IF, IHC-P, ELISA
Reactivity	Human, Mouse, Rat

References (2)

Package

100 µg

Applications

Application Note

*Optimal dilutions/concentrations should be determined by the researcher.

Suggested dilution	Recommended dilution
WB	2 µg/mL
ICC/IF	20 µg/mL
IHC-P	1-2 µg/mL
ELISA	Assay dependent

Not tested in other applications.

Calculated MW 91 kDa. ([Note](#))

Product Note At least three isoforms are known to exist; this antibody will detect all three isoforms.

Properties

Form	Liquid
Buffer	PBS
Preservative	0.02% Sodium azide
Storage	Store as concentrated solution. Centrifuge briefly prior to opening vial. For short-term storage (1-2 weeks), store at 4°C. For long-term storage, aliquot and store at -20°C or below. Avoid multiple freeze-thaw cycles.
Concentration	1 mg/ml (Please refer to the vial label for the specific concentration.)
Immunogen	PGC1 alpha antibody was raised against a 17 amino acid peptide near the amino terminus of human PGC1 alpha. The immunogen is located within amino acids 200 - 250 of PGC1 alpha.
Purification	Purified by antigen-affinity chromatography
Conjugation	Unconjugated



For full product information, images and publications, please visit our [website](#).

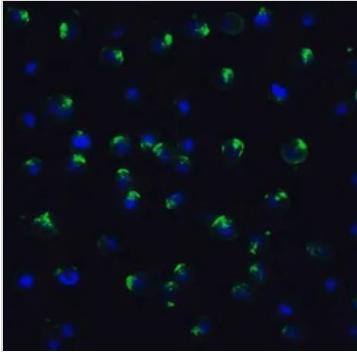
Date 2025 / 12 / 16 Page 1 of 2

For laboratory research use only. Not for any clinical, therapeutic, or diagnostic use in humans or animals. Not for animal or human consumption.

Note

Purchasers shall not, and agree not to enable third parties to, analyze, copy, reverse engineer or otherwise attempt to determine the structure or sequence of the product.

DATA IMAGES



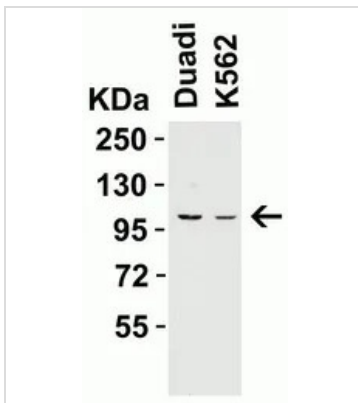
GTX31921 ICC/IF Image

ICC/IF analysis of 4% PFA-fixed MCF7 cells using GTX31921 PGC1 alpha antibody.

Green : Primary antibody

Blue : DAPI

Dilution : 20 µg/mL



GTX31921 WB Image

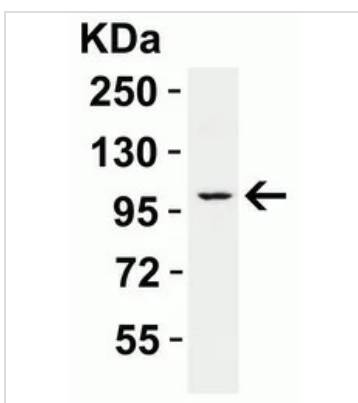
WB analysis of various samples using GTX31921 PGC1 alpha antibody.

Lane 1 : Duadi cell lysate

Lane 2 : K562 cell lysate

Loading : 15 µg

Dilution : 2 µg/mL



GTX31921 WB Image

WB analysis of mouse skin tissue lysate using GTX31921 PGC1 alpha antibody.

Loading : 15 µg

Dilution : 2 µg/mL



For full product information, images and publications, please visit our [website](#).