

HDAC6 antibody

Cat. No. GTX31926

Host	Rabbit
Clonality	Polyclonal
Isotype	IgG
Applications	WB, IHC-P, ELISA
Reactivity	Human, Mouse

References (1)

Package

100 µg

Applications

Application Note

*Optimal dilutions/concentrations should be determined by the researcher.

Suggested dilution	Recommended dilution
WB	0.5 - 1 µg/mL
IHC-P	5 µg/mL
ELISA	Assay dependent

Not tested in other applications.

Calculated MW 131 kDa. ([Note](#))

Product Note Multiple isoforms of HDAC6 are known to exist. HDAC6 antibody is predicted to not cross-react with other members of the HDAC family.

Properties

Form	Liquid
Buffer	PBS
Preservative	0.02% Sodium azide
Storage	Store as concentrated solution. Centrifuge briefly prior to opening vial. For short-term storage (1-2 weeks), store at 4°C. For long-term storage, aliquot and store at -20°C or below. Avoid multiple freeze-thaw cycles.
Concentration	1 mg/ml (Please refer to the vial label for the specific concentration.)
Immunogen	HDAC6 antibody was raised against a 16 amino acid peptide near the carboxy terminus of human HDAC6. The immunogen is located within the last 50 amino acids of HDAC6.
Purification	Purified by antigen-affinity chromatography
Conjugation	Unconjugated



For full product information, images and publications, please visit our [website](#).

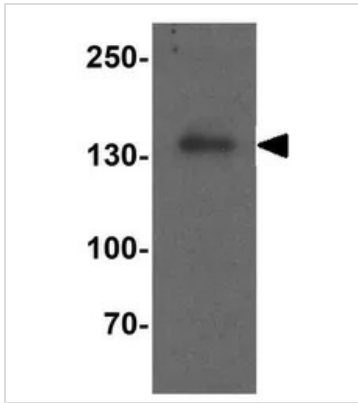
Date 2026 / 01 / 05 Page 1 of 2

For laboratory research use only. Not for any clinical, therapeutic, or diagnostic use in humans or animals. Not for animal or human consumption.

Note

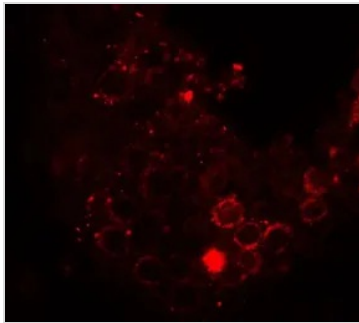
Purchasers shall not, and agree not to enable third parties to, analyze, copy, reverse engineer or otherwise attempt to determine the structure or sequence of the product.

DATA IMAGES



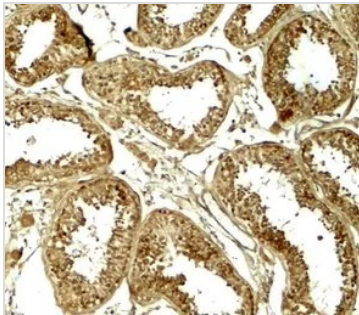
GTX31926 WB Image

WB analysis of human testis tissue lysate using GTX31926 HDAC6 antibody.
Working concentration : 1 µg/ml



GTX31926 IHC-P Image

IHC-P analysis of human testis tissue using GTX31926 HDAC6 antibody.
Working concentration : 20 µg/ml



GTX31926 IHC-P Image

IHC-P analysis of human testis tissue using GTX31926 HDAC6 antibody.
Working concentration : 5 µg/ml



For full product information, images and publications, please visit our [website](#).