

## LC3A antibody

Cat. No. GTX31934

Host	Rabbit
Clonality	Polyclonal
Isotype	IgG
Applications	WB, IHC-P, ELISA
Reactivity	Human, Mouse, Rat

Package  
100 µg

## Applications

## Application Note

\*Optimal dilutions/concentrations should be determined by the researcher.

Suggested dilution	Recommended dilution
WB	0.5 - 1 µg/mL
IHC-P	5 µg/mL
ELISA	Assay dependent

Not tested in other applications.

Calculated MW	14 kDa. ( <a href="#">Note</a> )
Product Note	Multiple isoforms are known to exist. This antibody is predicted to detect LC3A, LC3B, and LC3C.

## Properties

Form	Liquid
Buffer	PBS
Preservative	0.02% Sodium azide
Storage	Store as concentrated solution. Centrifuge briefly prior to opening vial. For short-term storage (1-2 weeks), store at 4°C. For long-term storage, aliquot and store at -20°C or below. Avoid multiple freeze-thaw cycles.
Concentration	1 mg/ml (Please refer to the vial label for the specific concentration.)
Immunogen	LC3A antibody was raised against a 12 amino acid peptide near the center of human LC3AA. The immunogen is located within amino acids 20 - 70 of LC3A.
Purification	Purified by antigen-affinity chromatography
Conjugation	Unconjugated



For full product information, images and publications, please visit our [website](#).

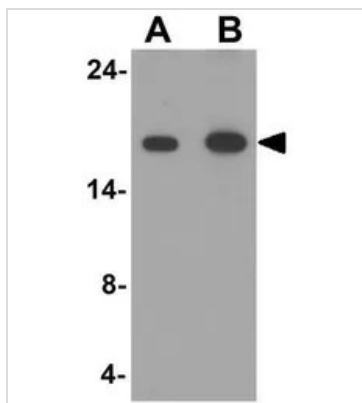
Date 2025 / 07 / 12 Page 1 of 2

For laboratory research use only. Not for any clinical, therapeutic, or diagnostic use in humans or animals. Not for animal or human consumption.

## Note

Purchasers shall not, and agree not to enable third parties to, analyze, copy, reverse engineer or otherwise attempt to determine the structure or sequence of the product.

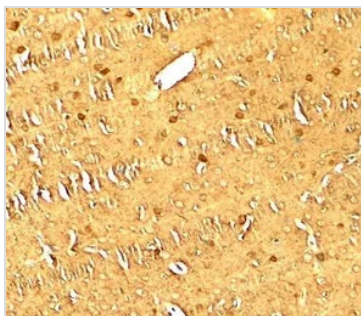
## DATA IMAGES



### GTX31934 WB Image

WB analysis of human brain tissue lysate using GTX31934 LC3A antibody.

Working concentration : (A) 1 and (B) 2  $\mu$ g/ml



### GTX31934 IHC-P Image

IHC-P analysis of rat brain tissue using GTX31934 LC3A antibody.

Working concentration : 5  $\mu$ g/ml



For full product information, images and publications, please visit our [website](#).