

ATG4A antibody

Cat. No. GTX31941

Host	Rabbit
Clonality	Polyclonal
Isotype	IgG
Application	WB, IHC-P, ELISA
Reactivity	Human, Mouse, Rat

Package
100 µg

APPLICATION

Application Note

*Optimal dilutions/concentrations should be determined by the researcher.

Suggested dilution	Recommended dilution
WB	1 - 2 µg/mL
IHC-P	5 µg/mL
ELISA	Assay dependent

Not tested in other applications.

Calculated MW 45 kDa. ([Note](#))

Product Note At least two isoforms of ATG4A are known to exist; this antibody will detect both isoforms. ATG4A is predicted to not cross-react with other ATG4 proteins.

PROPERTIES

Form	Liquid
Buffer	PBS
Preservative	0.02% Sodium azide
Storage	Store as concentrated solution. Centrifuge briefly prior to opening vial. For short-term storage (1-2 weeks), store at 4°C. For long-term storage, aliquot and store at -20°C or below. Avoid multiple freeze-thaw cycles.
Concentration	1 mg/ml (Please refer to the vial label for the specific concentration.)
Immunogen	ATG4A antibody was raised against an 18 amino acid peptide near the carboxy terminus of human ATG4A. The immunogen is located within the last 50 amino acids of ATG4A.
Purification	Purified by antigen-affinity chromatography
Conjugation	Unconjugated



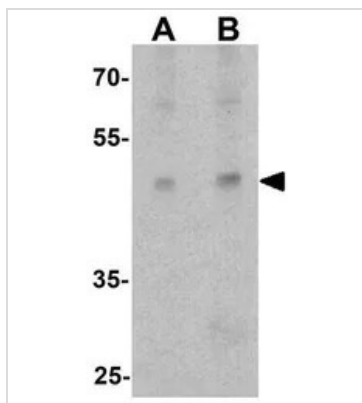
For full product information, images and publications, please visit our [website](#).

For laboratory research use only. Not for any clinical, therapeutic, or diagnostic use in humans or animals. Not for animal or human consumption.

Note

Purchasers shall not, and agree not to enable third parties to, analyze, copy, reverse engineer or otherwise attempt to determine the structure or sequence of the product.

DATA IMAGES



GTx31941 WB Image

WB analysis of EL4 cell lysate using GTx31941 ATG4A antibody.

Working concentration : (A) 1 and (B) 2 μ g/ml



GTx31941 IHC-P Image

IHC-P analysis of human spleen tissue using GTx31941 ATG4A antibody.

Working concentration : 5 μ g/ml



For full product information, images and publications, please visit our [website](#).