

## CTHRC1 antibody

Cat. No. GTX31944

Host	Rabbit
Clonality	Polyclonal
Isotype	IgG
Applications	WB, IHC-P, ELISA
Reactivity	Human, Mouse, Rat

Package  
100 µg

## Applications

## Application Note

\*Optimal dilutions/concentrations should be determined by the researcher.

Suggested dilution	Recommended dilution
WB	1 - 2 µg/mL
IHC-P	5 µg/mL
ELISA	Assay dependent

Not tested in other applications.

Calculated MW	26 kDa. ( <a href="#">Note</a> )
Product Note	At least two isoforms of CTHRC1 are known to exist; this antibody will detect only the larger isoform.

## Properties

Form	Liquid
Buffer	PBS
Preservative	0.02% Sodium azide
Storage	Store as concentrated solution. Centrifuge briefly prior to opening vial. For short-term storage (1-2 weeks), store at 4°C. For long-term storage, aliquot and store at -20°C or below. Avoid multiple freeze-thaw cycles.
Concentration	1 mg/ml (Please refer to the vial label for the specific concentration.)
Immunogen	CTHRC1 antibody was raised against a 19 amino acid peptide near the amino terminus of human CTHRC1. The immunogen is located within the first 50 amino acids of CTHRC1.
Purification	Purified by antigen-affinity chromatography
Conjugation	Unconjugated



For full product information, images and publications, please visit our [website](#).

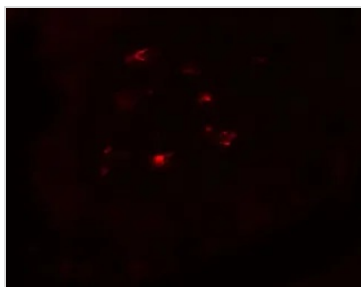
Date 2025 / 12 / 27 Page 1 of 2

For laboratory research use only. Not for any clinical, therapeutic, or diagnostic use in humans or animals. Not for animal or human consumption.

## Note

Purchasers shall not, and agree not to enable third parties to, analyze, copy, reverse engineer or otherwise attempt to determine the structure or sequence of the product.

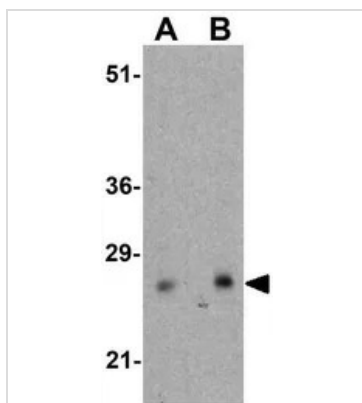
## DATA IMAGES



### GTX31944 IHC-P Image

IHC-P analysis of human small intestine tissue using GTX31944 CTHRC1 antibody.

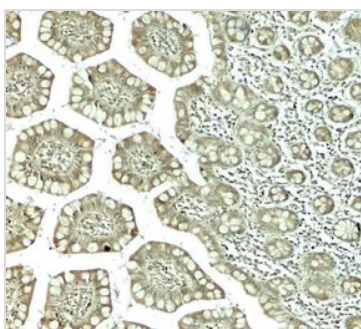
Working concentration : 20 µg/ml



### GTX31944 WB Image

WB analysis of rat small intestine tissue lysate using GTX31944 CTHRC1 antibody.

Working concentration : (A) 1 and (B) 2 µg/ml



### GTX31944 IHC-P Image

IHC-P analysis of human small intestine tissue using GTX31944 CTHRC1 antibody.

Working concentration : 5 µg/ml



For full product information, images and publications, please visit our [website](#).