

KIR2DS2 antibody

Cat. No. GTX31949

Host	Rabbit
Clonality	Polyclonal
Isotype	IgG
Applications	WB, ICC/IF, ELISA
Reactivity	Human

Package
100 µg

Applications

Application Note

*Optimal dilutions/concentrations should be determined by the researcher.

Suggested dilution	Recommended dilution
WB	1 - 2 µg/mL
ICC/IF	20 µg/mL
ELISA	Assay dependent

Not tested in other applications.

Calculated MW 34 kDa. ([Note](#))

Product Note KIR2DS2 antibody is human specific. Multiple isoforms are known to exist.

Properties

Form	Liquid
Buffer	PBS
Preservative	0.02% Sodium azide
Storage	Store as concentrated solution. Centrifuge briefly prior to opening vial. Store at 4°C.
Concentration	1 mg/ml (Please refer to the vial label for the specific concentration.)
Immunogen	KIR2DS2 antibody was raised against an 18 amino acid peptide near the carboxy terminus of human KIR2DS2. The immunogen is located within the last 50 amino acids of KIR2DS2.
Purification	Purified by antigen-affinity chromatography
Conjugation	Unconjugated

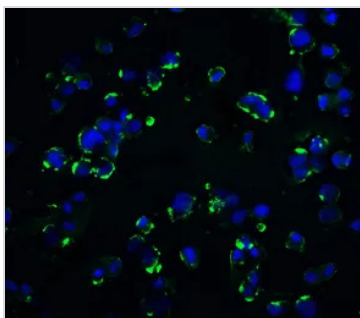


For full product information, images and publications, please visit our [website](#).

For laboratory research use only. Not for any clinical, therapeutic, or diagnostic use in humans or animals. Not for animal or human consumption.

Note

Purchasers shall not, and agree not to enable third parties to, analyze, copy, reverse engineer or otherwise attempt to determine the structure or sequence of the product.

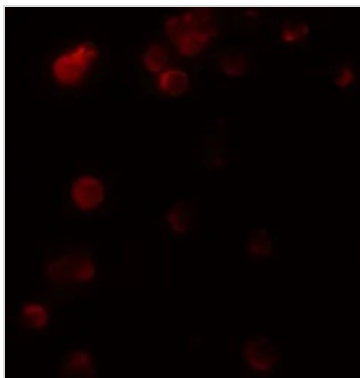
DATA IMAGES

GTX31949 ICC/IF Image

ICC/IF analysis of HEK293 cells using GTX31949 KIR2DS2 antibody.

Green : Primary antibody

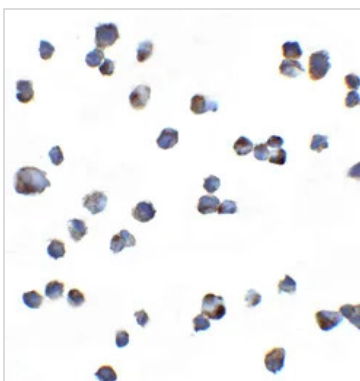
Blue : DAPI

Dilution : 20 µg/ml


GTX31949 ICC/IF Image

ICC/IF analysis of 293 cells using GTX31949 KIR2DS2 antibody.

Working concentration : 20 µg/ml


GTX31949 ICC/IF Image

ICC/IF analysis of HEK293 cells using GTX31949 KIR2DS2 antibody.

Dilution : 5 µg/ml



For full product information, images and publications, please visit our [website](#).