

SLC38A4 antibody

Cat. No. GTX31954

Host	Rabbit
Clonality	Polyclonal
Isotype	IgG
Applications	WB, IHC-P, ELISA
Reactivity	Human, Mouse

Package
100 µg

Applications

Application Note

*Optimal dilutions/concentrations should be determined by the researcher.

Suggested dilution	Recommended dilution
WB	1 - 2 µg/mL
IHC-P	2.5 µg/mL
ELISA	Assay dependent

Not tested in other applications.

Calculated MW 61 kDa. ([Note](#))

Product Note SLC38A4 will not cross-react with other members of the SLC38 protein family.

Properties

Form	Liquid
Buffer	PBS
Preservative	0.02% Sodium azide
Storage	Store as concentrated solution. Centrifuge briefly prior to opening vial. For short-term storage (1-2 weeks), store at 4°C. For long-term storage, aliquot and store at -20°C or below. Avoid multiple freeze-thaw cycles.
Concentration	1 mg/ml (Please refer to the vial label for the specific concentration.)
Immunogen	SLC38A4 antibody was raised against an 18 amino acid peptide from near the center of human SLC38A4. The immunogen is located within amino acids 270 - 320 of SLC38A4.
Purification	Purified by antigen-affinity chromatography
Conjugation	Unconjugated



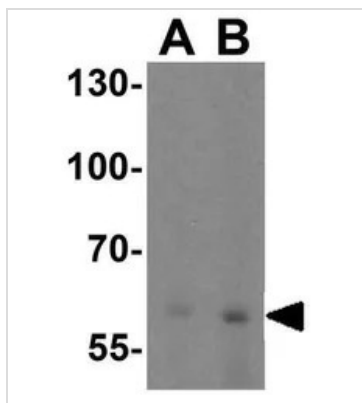
For full product information, images and publications, please visit our [website](#).

For laboratory research use only. Not for any clinical, therapeutic, or diagnostic use in humans or animals. Not for animal or human consumption.

Note

Purchasers shall not, and agree not to enable third parties to, analyze, copy, reverse engineer or otherwise attempt to determine the structure or sequence of the product.

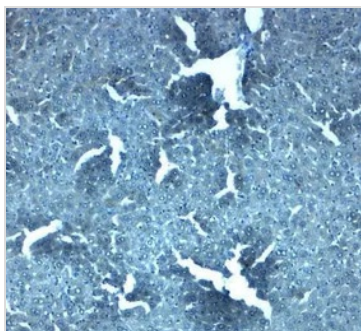
DATA IMAGES



GTX31954 WB Image

WB analysis of mouse kidney tissue lysate using GTX31954 SLC38A4 antibody.

Working concentration : (A) 1 and (B) 2 µg/ml



GTX31954 IHC-P Image

IHC-P analysis of mouse liver tissue using GTX31954 SLC38A4 antibody.

Working concentration : 2.5 µg/ml



For full product information, images and publications, please visit our [website](#).