

Ras antibody [AT2F8]

Cat. No. GTX31957

Host	Mouse
Clonality	Monoclonal
Isotype	IgG2b
Applications	WB, ICC/IF, FCM, ELISA
Reactivity	Human, Mouse

Package
100 µl

Applications

Application Note

WB: 1:500. ICC/IF: 1:100

Calculated MW	22 kDa. (Note)
Product Note	This antibody may cross react with human N-Ras and H-Ras.

Properties

Form	Liquid
Buffer	PBS, 10% Glycerol
Preservative	0.02% Sodium azide
Storage	Store as concentrated solution. Centrifuge briefly prior to opening vial. For short-term storage (1-2 weeks), store at 4°C. For long-term storage, aliquot and store at -20°C or below. Avoid multiple freeze-thaw cycles.
Concentration	1 mg/ml (Please refer to the vial label for the specific concentration.)
Immunogen	Recombinant human KRAS (1-186aa) purified from E. coli
Purification	By protein-A affinity chromatography
Conjugation	Unconjugated

Note

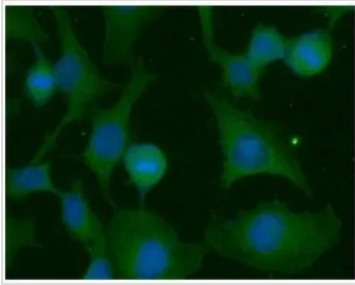
For laboratory research use only. Not for any clinical, therapeutic, or diagnostic use in humans or animals. Not for animal or human consumption.

Purchasers shall not, and agree not to enable third parties to, analyze, copy, reverse engineer or otherwise attempt to determine the structure or sequence of the product.



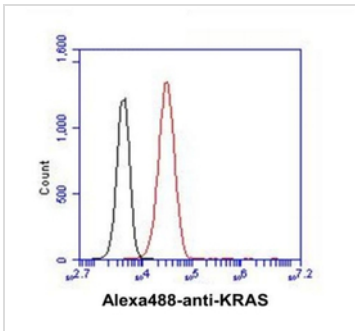
For full product information, images and publications, please visit our [website](#).

DATA IMAGES



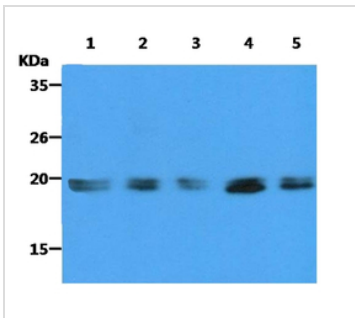
GTx31957 ICC/IF Image

ICC/IF analysis of KRAS in HeLa cells line, stained with DAPI (Blue) for nucleus staining and monoclonal anti-human KRAS antibody (1:100) with goat anti-mouse IgG-Alexa fluor 488 conjugate (Green).



GTx31957 FCM Image

Flow cytometry analysis of KRAS in A549 cell line, staining at 2-5ug for 1x10⁶ cells (red line). The secondary antibody used goat anti-mouse IgG Alexa fluor 488 conjugate. Isotype control antibody was mouse IgG (black line).



GTx31957 WB Image

The Cell lysates (40ug) were resolved by SDS-PAGE, transferred to PVDF membrane and probed with anti-human KRAS antibody (1:500). Proteins were visualized using a goat anti-mouse secondary antibody conjugated to HRP and an ECL detection system. Lane 1. : HeLa cell lysate Lane 2. : HepG2 cell lysate Lane 3. : Ramos cell lysate Lane 4. : A549 cell lysate Lane 5. : Balb/3T3 cell lysate



For full product information, images and publications, please visit our [website](#).