

TBCEL antibody [AT1B10]

Cat. No. GTX31958

Host	Mouse
Clonality	Monoclonal
Isotype	IgG2b
Applications	WB, ICC/IF, FCM, ELISA
Reactivity	Human, Mouse

Package
100 µl

Applications

Application Note

WB: 1:1000. ICC/IF: 1:100

Calculated MW 48 kDa. ([Note](#))

Properties

Form	Liquid
Buffer	PBS, 10% Glycerol
Preservative	0.02% Sodium azide
Storage	Store as concentrated solution. Centrifuge briefly prior to opening vial. For short-term storage (1-2 weeks), store at 4°C. For long-term storage, aliquot and store at -20°C or below. Avoid multiple freeze-thaw cycles.
Concentration	1 mg/ml (Please refer to the vial label for the specific concentration.)
Immunogen	Recombinant human TBCEL (1-424aa) purified from E. coli
Purification	By protein-A affinity chromatography
Conjugation	Unconjugated

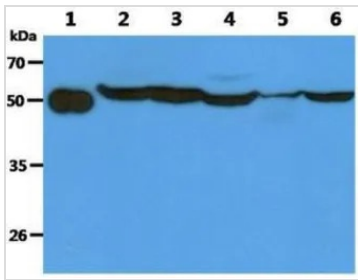
Note

For laboratory research use only. Not for any clinical, therapeutic, or diagnostic use in humans or animals. Not for animal or human consumption.

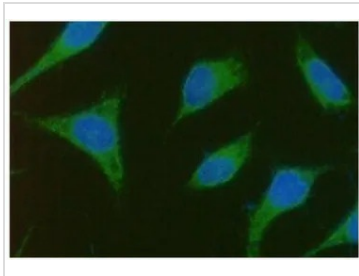
Purchasers shall not, and agree not to enable third parties to, analyze, copy, reverse engineer or otherwise attempt to determine the structure or sequence of the product.



For full product information, images and publications, please visit our [website](#).

DATA IMAGES

GTx31958 WB Image

The Recombinant Human TBCEL (50ng) and Cell lysates (40ug) were resolved by SDS-PAGE, transferred to PVDF membrane and probed with anti-human TBCEL antibody (1:1000). Proteins were visualized using a goat anti-mouse secondary antibody conjugated to HRP and an ECL detection system. Lane 1.: Recombinant Human TBCEL Lane 2.: PC3 cell lysate Lane 3.: LNCap cell lysate Lane 4 : 293T cell lysate Lane 5.: Mouse testis lysate Lane 6.: Mouse Kidney lysate


GTx31958 ICC/IF Image

ICC/IF analysis of TBCEL in PC3 cells line, stained with DAPI (Blue) for nucleus staining and monoclonal anti-human TBCEL antibody (1:100) with goat anti-mouse IgG-Alexa fluor 488 conjugate (Green).



For full product information, images and publications, please visit our [website](https://www.genetex.com).