

PGAM1 antibody [AT1G4]

Cat. No. GTX31959

Host	Mouse
Clonality	Monoclonal
Isotype	IgG2a
Applications	WB, ICC/IF, FCM, ELISA
Reactivity	Human

Package
100 µl

Applications

Application Note

WB: 1:1000. ICC/IF: 1:100

Calculated MW 29 kDa. ([Note](#))

Properties

Form	Liquid
Buffer	PBS, 10% Glycerol
Preservative	0.02% Sodium azide
Storage	Store as concentrated solution. Centrifuge briefly prior to opening vial. For short-term storage (1-2 weeks), store at 4°C. For long-term storage, aliquot and store at -20°C or below. Avoid multiple freeze-thaw cycles.
Concentration	1 mg/ml (Please refer to the vial label for the specific concentration.)
Immunogen	Recombinant human PGAM1 (1-254aa) purified from E. coli
Purification	By protein-A affinity chromatography
Conjugation	Unconjugated

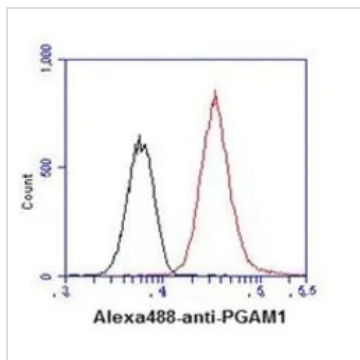
Note

For laboratory research use only. Not for any clinical, therapeutic, or diagnostic use in humans or animals. Not for animal or human consumption.

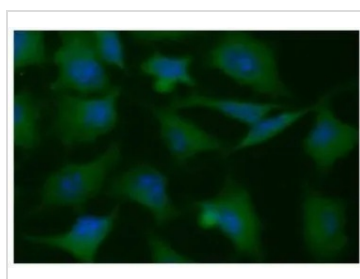
Purchasers shall not, and agree not to enable third parties to, analyze, copy, reverse engineer or otherwise attempt to determine the structure or sequence of the product.



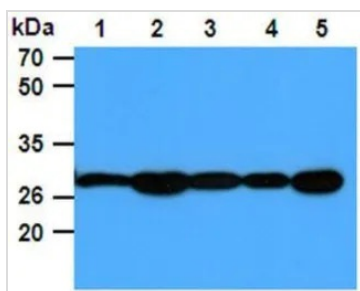
For full product information, images and publications, please visit our [website](#).

DATA IMAGES

GTX31959 FCM Image

Flow cytometry analysis of PGAM1 in HeLa cell line, staining at 2-5ug for 1×10^6 cells (red line). The secondary antibody used goat anti-mouse IgG Alexa fluor 488 conjugate. Isotype control antibody was mouse IgG (black line).


GTX31959 ICC/IF Image

ICC/IF analysis of PGAM1 in HeLa cells line, stained with DAPI (Blue) for nucleus staining and monoclonal anti-human PGAM1 antibody (1:100) with goat anti-mouse IgG-Alexa fluor 488 conjugate (Green).


GTX31959 WB Image

The Cell lysates (40ug) were resolved by SDS-PAGE, transferred to PVDF membrane and probed with anti-human PGAM1 antibody (1:1000). Proteins were visualized using a goat anti-mouse secondary antibody conjugated to HRP and an ECL detection system. Lane 1: 293T cell lysate Lane. 2: Jurkat cell lysate Lane. 3: Raji cell lysate Lane. 4: A431 cell lysate Lane. 5: HeLa cell lysate.



For full product information, images and publications, please visit our [website](https://www.genetex.com).