

TTBK2 antibody

Cat. No. GTX31971

Host	Rabbit
Clonality	Polyclonal
Isotype	IgG
Applications	IHC-P, ELISA
Reactivity	Human

Package
100 µg

Applications

Application Note

*Optimal dilutions/concentrations should be determined by the researcher.

Suggested dilution	Recommended dilution
IHC-P	5 µg/mL
ELISA	Assay dependent

Not tested in other applications.

Product Note

TTBK2 antibody is human specific. At least four isoforms of TTBK2 are known to exist; this antibody will detect only the two largest isoforms.

Properties

Form	Liquid
Buffer	PBS
Preservative	0.02% Sodium azide
Storage	Store as concentrated solution. Centrifuge briefly prior to opening vial. For short-term storage (1-2 weeks), store at 4°C. For long-term storage, aliquot and store at -20°C or below. Avoid multiple freeze-thaw cycles.
Concentration	1 mg/ml (Please refer to the vial label for the specific concentration.)
Immunogen	TTBK2 antibody was raised against an 18 amino acid synthetic peptide near the carboxy terminus of human TTBK2. The immunogen is located within the last 50 amino acids of TTBK2.
Purification	Purified by antigen-affinity chromatography
Conjugation	Unconjugated

Note

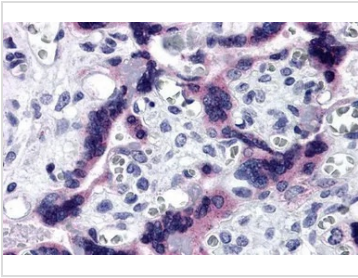
For laboratory research use only. Not for any clinical, therapeutic, or diagnostic use in humans or animals. Not for animal or human consumption.

Purchasers shall not, and agree not to enable third parties to, analyze, copy, reverse engineer or otherwise attempt to determine the structure or sequence of the product.



For full product information, images and publications, please visit our [website](#).

DATA IMAGES

**GTX31971 IHC-P Image**

IHC-P analysis of human placenta tissue using GTX31971 TTBK2 antibody.
Working concentration : 5 µg/ml



For full product information, images and publications, please visit our [website](#).