

SLC39A14 antibody

Cat. No. GTX31996

Host	Rabbit
Clonality	Polyclonal
Isotype	IgG
Applications	WB, IHC-P, ELISA
Reactivity	Human, Mouse, Rat

Package
100 µg

Applications

Application Note

*Optimal dilutions/concentrations should be determined by the researcher.

Suggested dilution	Recommended dilution
WB	1 - 2 µg/mL
IHC-P	2.5 µg/mL
ELISA	Assay dependent

Not tested in other applications.

Calculated MW 54 kDa. ([Note](#))

Product Note At least three isoforms are known to exist; this antibody will detect both isoforms. This antibody is predicted to not cross-react with other ZIP family members.

Properties

Form	Liquid
Buffer	PBS
Preservative	0.02% Sodium azide
Storage	Store as concentrated solution. Centrifuge briefly prior to opening vial. For short-term storage (1-2 weeks), store at 4°C. For long-term storage, aliquot and store at -20°C or below. Avoid multiple freeze-thaw cycles.
Concentration	1 mg/ml (Please refer to the vial label for the specific concentration.)
Immunogen	SLC39A14 antibody was raised against a 16 amino acid synthetic peptide near the center of human SLC39A14. The immunogen is located within amino acids 230 - 280 of SLC39A14.
Purification	Purified by antigen-affinity chromatography
Conjugation	Unconjugated

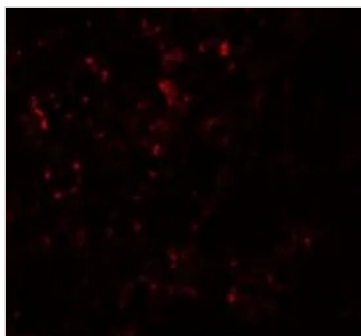


For full product information, images and publications, please visit our [website](#).

For laboratory research use only. Not for any clinical, therapeutic, or diagnostic use in humans or animals. Not for animal or human consumption.

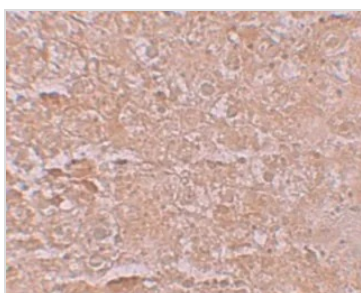
Note

Purchasers shall not, and agree not to enable third parties to, analyze, copy, reverse engineer or otherwise attempt to determine the structure or sequence of the product.

DATA IMAGES

GTX31996 IHC-P Image

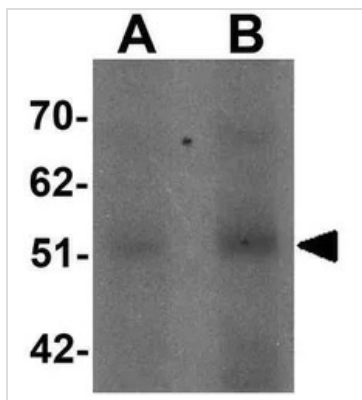
IHC-P analysis of mouse liver tissue using GTX31996 SLC39A14 antibody.

Working concentration : 20 µg/ml


GTX31996 IHC-P Image

IHC-P analysis of mouse liver tissue using GTX31996 SLC39A14 antibody.

Working concentration : 2.5 µg/ml


GTX31996 WB Image

WB analysis of human spleen tissue lysate using GTX31996 SLC39A14 antibody.

Working concentration : (A) 1 and (B) 2 µg/ml



For full product information, images and publications, please visit our [website](https://www.genetex.com).