

Rabex5 antibody

Cat. No. GTX32007

Host	Rabbit
Clonality	Polyclonal
Isotype	IgG
Applications	WB, IHC-P, ELISA
Reactivity	Human, Mouse, Rat

Package
100 µg

Applications

Application Note

*Optimal dilutions/concentrations should be determined by the researcher.

Suggested dilution	Recommended dilution
WB	1 µg/mL
IHC-P	5 µg/mL
ELISA	Assay dependent

Not tested in other applications.

Calculated MW 79 kDa. ([Note](#))

Product Note At least four isoforms of RABEX5 are known to exist; this antibody will recognize all four. RABEX5 antibody is predicted to not cross-react with other LRRFIP family members.

Properties

Form	Liquid
Buffer	PBS
Preservative	0.02% Sodium azide
Storage	Store as concentrated solution. Centrifuge briefly prior to opening vial. For short-term storage (1-2 weeks), store at 4°C. For long-term storage, aliquot and store at -20°C or below. Avoid multiple freeze-thaw cycles.
Concentration	1 mg/ml (Please refer to the vial label for the specific concentration.)
Immunogen	RABEX5 antibody was raised against a 19 amino acid synthetic peptide near the center terminus of human RABEX5. The immunogen is located within amino acids 430 - 480 of RABEX5.
Purification	Purified by antigen-affinity chromatography
Conjugation	Unconjugated



For full product information, images and publications, please visit our [website](#).

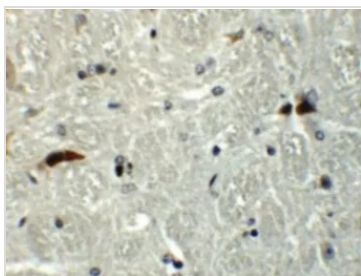
Date 2025 / 06 / 05 Page 1 of 2

For laboratory research use only. Not for any clinical, therapeutic, or diagnostic use in humans or animals. Not for animal or human consumption.

Note

Purchasers shall not, and agree not to enable third parties to, analyze, copy, reverse engineer or otherwise attempt to determine the structure or sequence of the product.

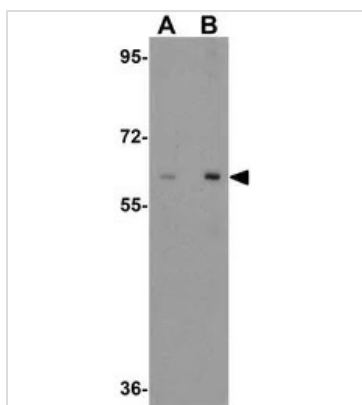
DATA IMAGES



GTX32007 IHC-P Image

IHC-P analysis of mouse brain tissue using GTX32007 Rabex5 antibody.

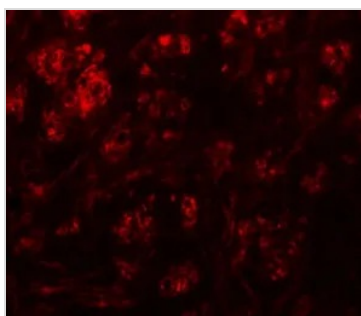
Working concentration : 5 µg/ml



GTX32007 WB Image

WB analysis of human liver tissue lysate using GTX32007 Rabex5 antibody.

Working concentration : (A) 1 and (B) 2 µg/ml



GTX32007 IHC-P Image

IHC-P analysis of mouse brain tissue using GTX32007 Rabex5 antibody.

Working concentration : 20 µg/ml



For full product information, images and publications, please visit our [website](#).