

SPTLC1 antibody

Cat. No. GTX32011

Host	Rabbit
Clonality	Polyclonal
Isotype	IgG
Applications	WB, IHC-P, ELISA
Reactivity	Human

Package
100 µg

Applications

Application Note

*Optimal dilutions/concentrations should be determined by the researcher.

Suggested dilution	Recommended dilution
WB	1 µg/mL
IHC-P	5 µg/mL
ELISA	Assay dependent

Not tested in other applications.

Calculated MW 53 kDa. ([Note](#))

Product Note At least two isoforms of SPT1 are known to exist; this antibody will detect only isoform a. SPT1 antibody is predicted to not cross-react with SPT2.

Properties

Form	Liquid
Buffer	PBS
Preservative	0.02% Sodium azide
Storage	Store as concentrated solution. Centrifuge briefly prior to opening vial. For short-term storage (1-2 weeks), store at 4°C. For long-term storage, aliquot and store at -20°C or below. Avoid multiple freeze-thaw cycles.
Concentration	1 mg/ml (Please refer to the vial label for the specific concentration.)
Immunogen	SPTLC1 antibody was raised against a 17 amino acid synthetic peptide near the carboxy terminus of human SPTLC1. The immunogen is located within amino acids 380 - 430 of SPTLC1.
Purification	Purified by antigen-affinity chromatography
Conjugation	Unconjugated



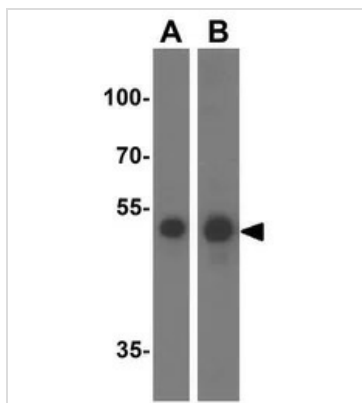
For full product information, images and publications, please visit our [website](#).

For laboratory research use only. Not for any clinical, therapeutic, or diagnostic use in humans or animals. Not for animal or human consumption.

Note

Purchasers shall not, and agree not to enable third parties to, analyze, copy, reverse engineer or otherwise attempt to determine the structure or sequence of the product.

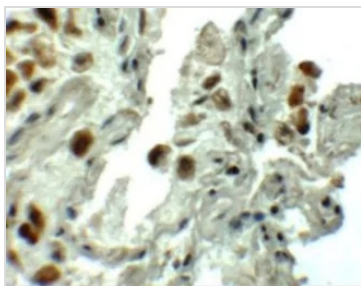
DATA IMAGES



GTX32011 WB Image

WB analysis of (A) A549 and (B) HeLa cell lysate using GTX32011 SPTLC1 antibody.

Working concentration : 1 µg/ml



GTX32011 IHC-P Image

IHC-P analysis of human lung tissue using GTX32011 SPTLC1 antibody.

Working concentration : 5 µg/ml



For full product information, images and publications, please visit our [website](#).