

TRMT12 antibody

Cat. No. GTX32015

Host	Rabbit
Clonality	Polyclonal
Isotype	IgG
Applications	WB, ICC/IF, ELISA
Reactivity	Human, Mouse

Package
100 µg

Applications

Application Note

*Optimal dilutions/concentrations should be determined by the researcher.

Suggested dilution	Recommended dilution
WB	0.5 µg/mL
ICC/IF	10 µg/mL
ELISA	Assay dependent

Not tested in other applications.

Calculated MW 50 kDa. ([Note](#))

Product Note This antibody is predicted to not cross-react with other TYW protein family members. At least two isoforms are known to exist; this antibody will detect both isoforms

Properties

Form	Liquid
Buffer	PBS
Preservative	0.02% Sodium azide
Storage	Store as concentrated solution. Centrifuge briefly prior to opening vial. Store at 4°C.
Concentration	1 mg/ml (Please refer to the vial label for the specific concentration.)
Immunogen	TRMT12 antibody was raised against a 19 amino acid synthetic peptide near the amino terminus of human TRMT12. The immunogen is located within the first 50 amino acids of TRMT12.
Purification	Purified by antigen-affinity chromatography
Conjugation	Unconjugated



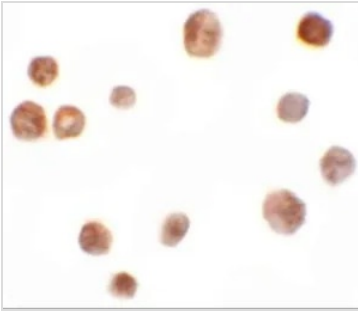
For full product information, images and publications, please visit our [website](#).

For laboratory research use only. Not for any clinical, therapeutic, or diagnostic use in humans or animals. Not for animal or human consumption.

Note

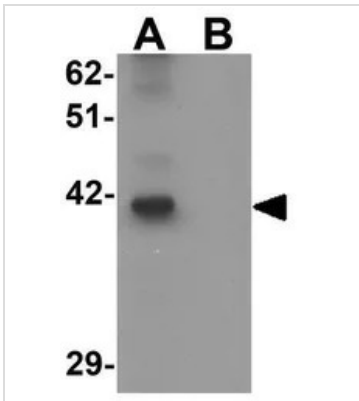
Purchasers shall not, and agree not to enable third parties to, analyze, copy, reverse engineer or otherwise attempt to determine the structure or sequence of the product.

DATA IMAGES



GTX32015 ICC/IF Image

ICC/IF analysis of K562 cells using GTX32015 TRMT12 antibody.
Working concentration : 10 µg/ml



GTX32015 WB Image

WB analysis of K562 cell lysate in (A) the absence and (B) the presence of blocking peptide using GTX32015 TRMT12 antibody.
Working concentration : 0.5 µg/ml



For full product information, images and publications, please visit our [website](#).