

UPK1B antibody

Cat. No. GTX32032

Host	Rabbit
Clonality	Polyclonal
Isotype	IgG
Applications	WB, IHC-P, ELISA
Reactivity	Human, Mouse, Rat

Package
100 µg

Applications

Application Note

*Optimal dilutions/concentrations should be determined by the researcher.

Suggested dilution	Recommended dilution
WB	0.5 - 1 µg/mL
IHC-P	5 µg/mL
ELISA	Assay dependent

Not tested in other applications.

Calculated MW 30 kDa. ([Note](#))

Product Note At least two isoforms of UPK1B are known to exist; this antibody will recognize both isoforms. UPK1B antibody is predicted to not cross-react with other tetraspanin protein family members.

Properties

Form	Liquid
Buffer	PBS
Preservative	0.02% Sodium azide
Storage	Store as concentrated solution. Centrifuge briefly prior to opening vial. For short-term storage (1-2 weeks), store at 4°C. For long-term storage, aliquot and store at -20°C or below. Avoid multiple freeze-thaw cycles.
Concentration	1 mg/ml (Please refer to the vial label for the specific concentration.)
Immunogen	UPK1B antibody was raised against a 17 amino acid synthetic peptide near the center of human UPK1B. The immunogen is located within amino acids 110 - 160 of UPK1B.
Purification	Purified by antigen-affinity chromatography
Conjugation	Unconjugated

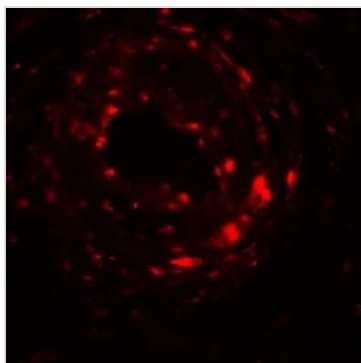


For full product information, images and publications, please visit our [website](#).

For laboratory research use only. Not for any clinical, therapeutic, or diagnostic use in humans or animals. Not for animal or human consumption.

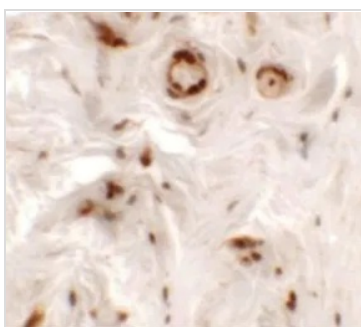
Note

Purchasers shall not, and agree not to enable third parties to, analyze, copy, reverse engineer or otherwise attempt to determine the structure or sequence of the product.

DATA IMAGES

GTX32032 IHC-P Image

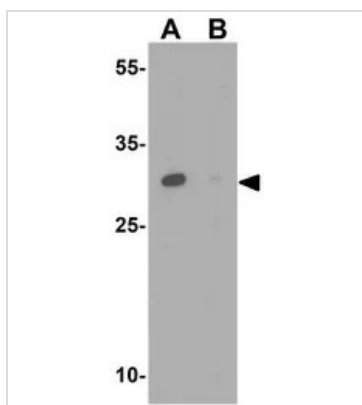
IHC-P analysis of human bladder tissue using GTX32032 UPK1B antibody.

Working concentration : 20 µg/ml


GTX32032 IHC-P Image

IHC-P analysis of human bladder tissue using GTX32032 UPK1B antibody.

Working concentration : 5 µg/ml


GTX32032 WB Image

WB analysis of human kidney tissue lysate in the (A) absence and (B) presence of blocking peptide using GTX32032 UPK1B antibody.

Working concentration : 1 µg/ml



For full product information, images and publications, please visit our [website](#).