

## PRICKLE4 antibody

Cat. No. GTX32042

Host	Rabbit
Clonality	Polyclonal
Isotype	IgG
Applications	WB, ICC/IF, ELISA
Reactivity	Human

Package  
100 µg

## Applications

## Application Note

\*Optimal dilutions/concentrations should be determined by the researcher.

Suggested dilution	Recommended dilution
WB	0.25 µg/mL
ICC/IF	5 µg/mL
ELISA	Assay dependent

Not tested in other applications.

Calculated MW 38 kDa. ([Note](#))

**Product Note** Two isoforms of PRICKLE4 are known to exist. PRICKLE4 antibody is predicted to not cross-react with other PRICKLE protein family members.

## Properties

Form	Liquid
Buffer	PBS
Preservative	0.02% Sodium azide
Storage	Store as concentrated solution. Centrifuge briefly prior to opening vial. For short-term storage (1-2 weeks), store at 4°C. For long-term storage, aliquot and store at -20°C or below. Avoid multiple freeze-thaw cycles.
Concentration	1 mg/ml (Please refer to the vial label for the specific concentration.)
Immunogen	PRIP2LE4 antibody was raised against an 18 amino acid synthetic peptide near the amino terminus of human PRIP2LE4. The immunogen is located within the first 50 amino acids of PRIP2LE4.
Purification	Purified by antigen-affinity chromatography
Conjugation	Unconjugated



For full product information, images and publications, please visit our [website](#).

Date 2026 / 01 / 22 Page 1 of 2

For laboratory research use only. Not for any clinical, therapeutic, or diagnostic use in humans or animals. Not for animal or human consumption.

**Note**

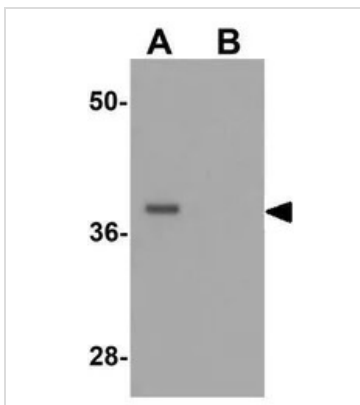
Purchasers shall not, and agree not to enable third parties to, analyze, copy, reverse engineer or otherwise attempt to determine the structure or sequence of the product.

#### DATA IMAGES



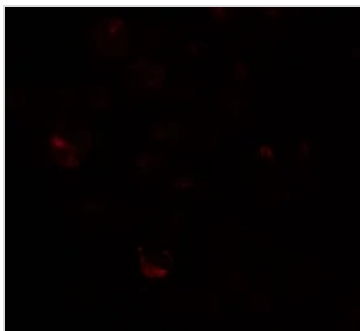
##### GTX32042 ICC/IF Image

ICC/IF analysis of A549 cells using GTX32042 PRICKLE4 antibody.  
Working concentration : 5 µg/ml



##### GTX32042 WB Image

WB analysis of A549 cell lysate in (A) the absence and (B) the presence of blocking peptide using GTX32042 PRICKLE4 antibody.  
Working concentration : 0.25 µg/ml



##### GTX32042 ICC/IF Image

ICC/IF analysis of A549 cells using GTX32042 PRICKLE4 antibody.  
Working concentration : 20 µg/ml



For full product information, images and publications, please visit our [website](#).