

B9D1 antibody

Cat. No. GTX32055

Host	Rabbit
Clonality	Polyclonal
Isotype	IgG
Applications	WB, ICC/IF, ELISA
Reactivity	Human

Package
100 µg

Applications

Application Note

*Optimal dilutions/concentrations should be determined by the researcher.

Suggested dilution	Recommended dilution
WB	1 µg/mL
ICC/IF	5 µg/mL
ELISA	Assay dependent

Not tested in other applications.

Calculated MW 23 kDa. ([Note](#))

Product Note At least two isoforms of B9D1 are known to exist; this antibody will only recognize the longest isoform. B9D1 antibody is predicted to not cross-react with other DNAJC family members.

Properties

Form	Liquid
Buffer	PBS
Preservative	0.02% Sodium azide
Storage	Store as concentrated solution. Centrifuge briefly prior to opening vial. For short-term storage (1-2 weeks), store at 4°C. For long-term storage, aliquot and store at -20°C or below. Avoid multiple freeze-thaw cycles.
Concentration	1 mg/ml (Please refer to the vial label for the specific concentration.)
Immunogen	B9D1 antibody was raised against an 18 amino acid synthetic peptide near the carboxy terminus of human B9D1. The immunogen is located within amino acids 130 - 180 of B9D1.
Purification	Purified by antigen-affinity chromatography
Conjugation	Unconjugated



For full product information, images and publications, please visit our [website](#).

For laboratory research use only. Not for any clinical, therapeutic, or diagnostic use in humans or animals. Not for animal or human consumption.

Note

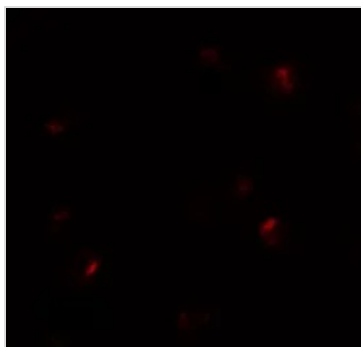
Purchasers shall not, and agree not to enable third parties to, analyze, copy, reverse engineer or otherwise attempt to determine the structure or sequence of the product.

DATA IMAGES

GTX32055 ICC/IF Image

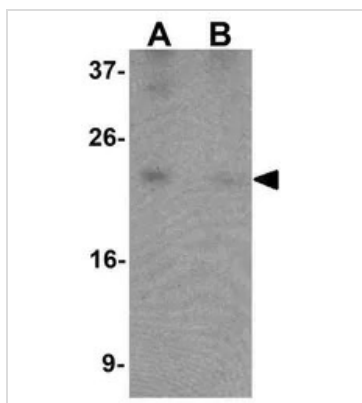
ICC/IF analysis of 293 cells using GTX32055 B9D1 antibody.

Working concentration : 5 µg/ml


GTX32055 ICC/IF Image

ICC/IF analysis of 293 cells using GTX32055 B9D1 antibody.

Working concentration : 20 µg/ml


GTX32055 WB Image

WB analysis of 293 cell lysate in (A) the absence and (B) the presence of blocking peptide using GTX32055 B9D1 antibody.

Working concentration : 1 µg/ml



For full product information, images and publications, please visit our [website](#).