

## ZNF521 antibody

Cat. No. GTX32072

Host	Rabbit
Clonality	Polyclonal
Isotype	IgG
Applications	WB, ICC/IF, ELISA
Reactivity	Human

Package  
100 µg

## Applications

## Application Note

\*Optimal dilutions/concentrations should be determined by the researcher.

Suggested dilution	Recommended dilution
WB	1 µg/mL
ICC/IF	2.5 µg/mL
ELISA	Assay dependent

Not tested in other applications.

Calculated MW	148 kDa. ( <a href="#">Note</a> )
Product Note	ZNF521 antibody is human specific.

## Properties

Form	Liquid
Buffer	PBS
Preservative	0.02% Sodium azide
Storage	Store as concentrated solution. Centrifuge briefly prior to opening vial. For short-term storage (1-2 weeks), store at 4°C. For long-term storage, aliquot and store at -20°C or below. Avoid multiple freeze-thaw cycles.
Concentration	1 mg/ml (Please refer to the vial label for the specific concentration.)
Immunogen	ZNF521 antibody was raised against an 18 amino acid synthetic peptide near the amino terminus of human ZNF521. The immunogen is located within the first 50 amino acids of ZNF521.
Purification	Purified by antigen-affinity chromatography
Conjugation	Unconjugated

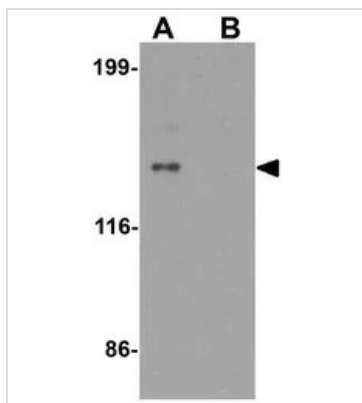


For full product information, images and publications, please visit our [website](#).

For laboratory research use only. Not for any clinical, therapeutic, or diagnostic use in humans or animals. Not for animal or human consumption.

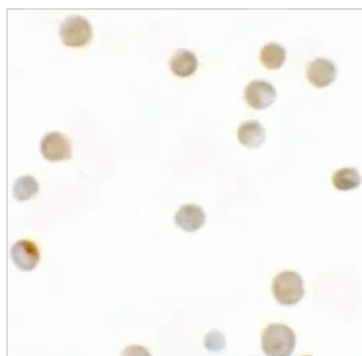
**Note**

Purchasers shall not, and agree not to enable third parties to, analyze, copy, reverse engineer or otherwise attempt to determine the structure or sequence of the product.

**DATA IMAGES**

**GTX32072 WB Image**

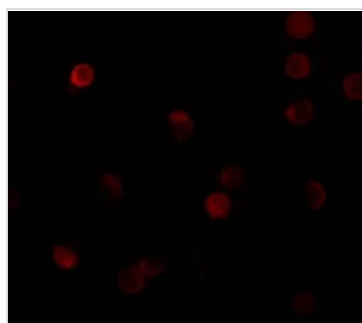
WB analysis of HeLa cell lysate in (A) the absence and (B) the presence of blocking peptide using GTX32072 ZNF521 antibody.

Working concentration : 1 µg/ml


**GTX32072 ICC/IF Image**

ICC/IF analysis of HeLa cells using GTX32072 ZNF521 antibody.

Working concentration : 2.5 µg/ml


**GTX32072 ICC/IF Image**

ICC/IF analysis of HeLa cells using GTX32072 ZNF521 antibody.

Working concentration : 20 µg/ml



For full product information, images and publications, please visit our [website](#).