

## DDX60 antibody

Cat. No. GTX32082

Host	Rabbit
Clonality	Polyclonal
Isotype	IgG
Applications	WB, ICC/IF, ELISA
Reactivity	Human, Mouse, Rat

References ( 3 )

Package

100 µg

## Applications

## Application Note

\*Optimal dilutions/concentrations should be determined by the researcher.

Suggested dilution	Recommended dilution
WB	1 - 2 µg/mL
ICC/IF	20 µg/mL
ELISA	Assay dependent

Not tested in other applications.

Calculated MW	198 kDa. ( <a href="#">Note</a> )
Product Note	At least three isoforms of DDX60 are known to exist; this antibody will detect all three isoforms.

## Properties

Form	Liquid
Buffer	PBS
Preservative	0.02% Sodium azide
Storage	Store as concentrated solution. Centrifuge briefly prior to opening vial. For short-term storage (1-2 weeks), store at 4°C. For long-term storage, aliquot and store at -20°C or below. Avoid multiple freeze-thaw cycles.
Concentration	1 mg/ml (Please refer to the vial label for the specific concentration.)
Immunogen	DDX60 antibody was raised against a 17 amino acid synthetic peptide near the center of human DDX60. The immunogen is located within amino acids 1140 - 1190 of DDX60.
Purification	Purified by antigen-affinity chromatography
Conjugation	Unconjugated



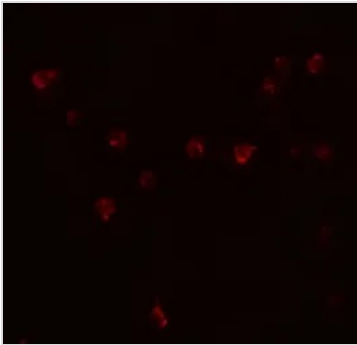
For full product information, images and publications, please visit our [website](#).

For laboratory research use only. Not for any clinical, therapeutic, or diagnostic use in humans or animals. Not for animal or human consumption.

## Note

Purchasers shall not, and agree not to enable third parties to, analyze, copy, reverse engineer or otherwise attempt to determine the structure or sequence of the product.

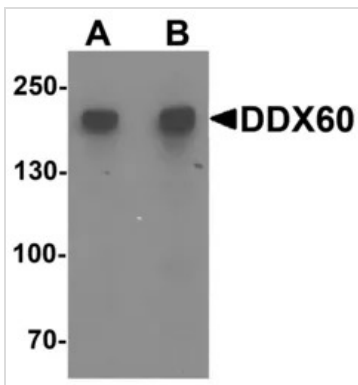
## DATA IMAGES



### GTX32082 ICC/IF Image

ICC/IF analysis of A-20 cells using GTX32082 DDX60 antibody.

Working concentration : 20 µg/ml



### GTX32082 WB Image

WB analysis of A20 cell lysate using GTX32082 DDX60 antibody.

Dilution : 1 µg/ml (Lane A) and 2 µg/ml (Lane B)



For full product information, images and publications, please visit our [website](#).