

CLEC2A antibody

Cat. No. GTX32085

Host	Rabbit
Clonality	Polyclonal
Isotype	IgG
Applications	WB, ICC/IF, ELISA
Reactivity	Human

Package
100 µg

Applications

Application Note

*Optimal dilutions/concentrations should be determined by the researcher.

Suggested dilution	Recommended dilution
WB	1 µg/mL
ICC/IF	20 µg/mL
ELISA	Assay dependent

Not tested in other applications.

Calculated MW 20 kDa. ([Note](#))**Product Note** CLEC2A antibody is human specific. Two alternatively spliced transcript variants have been observed.

Properties

Form	Liquid
Buffer	PBS
Preservative	0.02% Sodium azide
Storage	Store as concentrated solution. Centrifuge briefly prior to opening vial. For short-term storage (1-2 weeks), store at 4°C. For long-term storage, aliquot and store at -20°C or below. Avoid multiple freeze-thaw cycles.
Concentration	1 mg/ml (Please refer to the vial label for the specific concentration.)
Immunogen	CLEC2A antibody was raised against a 16 amino acid synthetic peptide near the amino terminus of human CLEC2A. The immunogen is located within the first 50 amino acids of CLEC2A.
Purification	Purified by antigen-affinity chromatography
Conjugation	Unconjugated



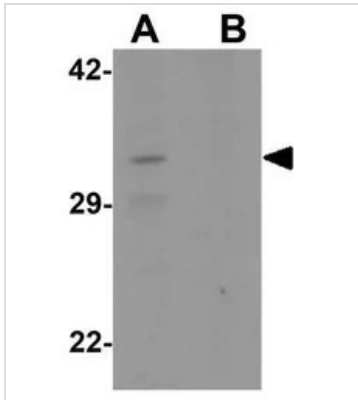
For full product information, images and publications, please visit our [website](#).

For laboratory research use only. Not for any clinical, therapeutic, or diagnostic use in humans or animals. Not for animal or human consumption.

Note

Purchasers shall not, and agree not to enable third parties to, analyze, copy, reverse engineer or otherwise attempt to determine the structure or sequence of the product.

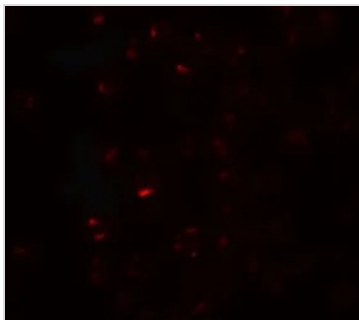
DATA IMAGES



GTX32085 WB Image

WB analysis of K562 cell lysate in (A) the absence and (B) the presence of blocking peptide using GTX32085 CLEC2A antibody.

Working concentration : 1 µg/ml



GTX32085 ICC/IF Image

ICC/IF analysis of K562 cells using GTX32085 CLEC2A antibody.

Working concentration : 20 µg/ml



For full product information, images and publications, please visit our [website](#).