

MYCT1 antibody

Cat. No. GTX32092

Host	Rabbit
Clonality	Polyclonal
Isotype	IgG
Applications	WB, ELISA
Reactivity	Human, Mouse, Rat

Package
100 µg

Applications

Application Note

*Optimal dilutions/concentrations should be determined by the researcher.

Suggested dilution	Recommended dilution
WB	1 - 2 µg/mL
ELISA	Assay dependent

Not tested in other applications.

Calculated MW 27 kDa. ([Note](#))

Product Note At least two isoforms of MYCT1 are known to exist; this antibody will detect both isoforms.

Properties

Form	Liquid
Buffer	PBS
Preservative	0.02% Sodium azide
Storage	Store as concentrated solution. Centrifuge briefly prior to opening vial. For short-term storage (1-2 weeks), store at 4°C. For long-term storage, aliquot and store at -20°C or below. Avoid multiple freeze-thaw cycles.
Concentration	1 mg/ml (Please refer to the vial label for the specific concentration.)
Immunogen	MYCT1 antibody was raised against a 17 amino acid synthetic peptide near the carboxy terminus of human MYCT1. The immunogen is located within the last 50 amino acids of MYCT1.
Purification	Purified by antigen-affinity chromatography
Conjugation	Unconjugated

Note

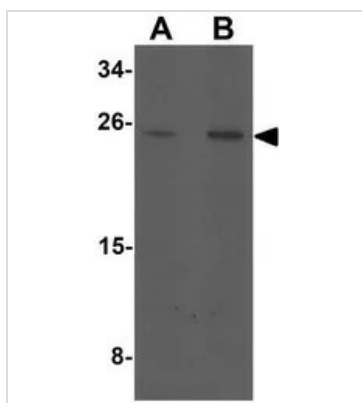
For laboratory research use only. Not for any clinical, therapeutic, or diagnostic use in humans or animals. Not for animal or human consumption.

Purchasers shall not, and agree not to enable third parties to, analyze, copy, reverse engineer or otherwise attempt to determine the structure or sequence of the product.



For full product information, images and publications, please visit our [website](#).

DATA IMAGES



GTX32092 WB Image

WB analysis of rat lung tissue lysate using GTX32092 MYCT1 antibody.

Working concentration : (A) 1 and (B) 2 μ g/ml



For full product information, images and publications, please visit our [website](#).