

Beclin 2 antibody

Cat. No. GTX32141

Host	Rabbit
Clonality	Polyclonal
Isotype	IgG
Application	WB, IHC-P, ELISA
Reactivity	Human

Package
100 µg

APPLICATION

Application Note

*Optimal dilutions/concentrations should be determined by the researcher.

Suggested dilution	Recommended dilution
WB	1 - 2 µg/mL
IHC-P	5 µg/mL
ELISA	Assay dependent

Not tested in other applications.

Calculated MW 48 kDa. ([Note](#))

Product Note Beclin 2 antibody is human specific. At least two isoforms of Beclin 2 are known to exist; this antibody will only detect the longer isoform. Beclin 2 antibody is predicted to not cross-react with Beclin 1.

PROPERTIES

Form	Liquid
Buffer	PBS
Preservative	0.02% Sodium azide
Storage	Store as concentrated solution. Centrifuge briefly prior to opening vial. For short-term storage (1-2 weeks), store at 4°C. For long-term storage, aliquot and store at -20°C or below. Avoid multiple freeze-thaw cycles.
Concentration	1 mg/ml (Please refer to the vial label for the specific concentration.)
Immunogen	Beclin 2 antibody was raised against a 16 amino acid peptide near the amino terminus of human Beclin 2. The immunogen is located within amino acids 30 - 80 of Beclin 2.
Purification	Purified by antigen-affinity chromatography
Conjugation	Unconjugated



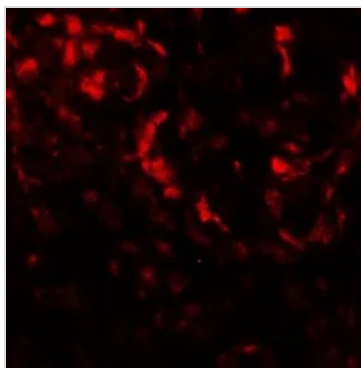
For full product information, images and publications, please visit our [website](#).

Date 2024 / 04 / 24 Page 1 of 2

For laboratory research use only. Not for any clinical, therapeutic, or diagnostic use in humans or animals. Not for animal or human consumption.

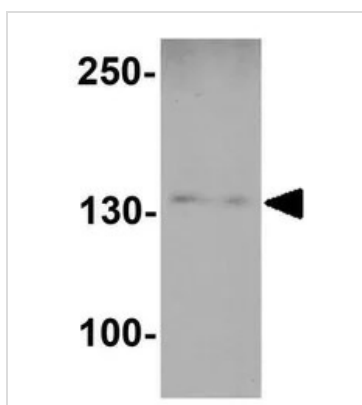
Note

Purchasers shall not, and agree not to enable third parties to, analyze, copy, reverse engineer or otherwise attempt to determine the structure or sequence of the product.

DATA IMAGES

GTX32141 IHC-P Image

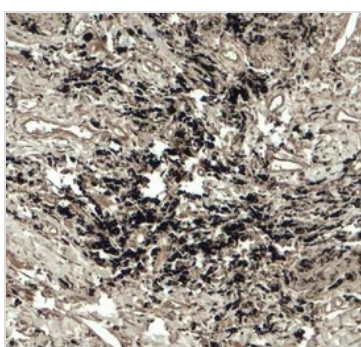
IHC-P analysis of human lung carcinoma tissue using GTX32141 Beclin 2 antibody.

Working concentration : 20 µg/ml


GTX32141 WB Image

WB analysis of Jurkat cell lysate in (A) the absence and (B) the presence of blocking peptide using GTX32141 Beclin 2 antibody.

Working concentration : 1 µg/ml


GTX32141 IHC-P Image

IHC-P analysis of human lung carcinoma tissue using GTX32141 Beclin 2 antibody.

Working concentration : 5 µg/ml



For full product information, images and publications, please visit our [website](#).