

Beclin 2 antibody

Cat. No. GTX32141

| | |
|---------------------|------------------|
| Host | Rabbit |
| Clonality | Polyclonal |
| Isotype | IgG |
| Applications | WB, IHC-P, ELISA |
| Reactivity | Human |

Package
100 µg

Applications

Application Note

*Optimal dilutions/concentrations should be determined by the researcher.

| Suggested dilution | Recommended dilution |
|--------------------|----------------------|
| WB | 1 - 2 µg/mL |
| IHC-P | 5 µg/mL |
| ELISA | Assay dependent |

Not tested in other applications.

Calculated MW 48 kDa. ([Note](#))

Product Note Beclin 2 antibody is human specific. At least two isoforms of Beclin 2 are known to exist; this antibody will only detect the longer isoform. Beclin 2 antibody is predicted to not cross-react with Beclin 1.

Properties

| | |
|----------------------|--|
| Form | Liquid |
| Buffer | PBS |
| Preservative | 0.02% Sodium azide |
| Storage | Store as concentrated solution. Centrifuge briefly prior to opening vial. For short-term storage (1-2 weeks), store at 4°C. For long-term storage, aliquot and store at -20°C or below. Avoid multiple freeze-thaw cycles. |
| Concentration | 1 mg/ml (Please refer to the vial label for the specific concentration.) |
| Immunogen | Beclin 2 antibody was raised against a 16 amino acid peptide near the amino terminus of human Beclin 2. The immunogen is located within amino acids 30 - 80 of Beclin 2. |
| Purification | Purified by antigen-affinity chromatography |
| Conjugation | Unconjugated |



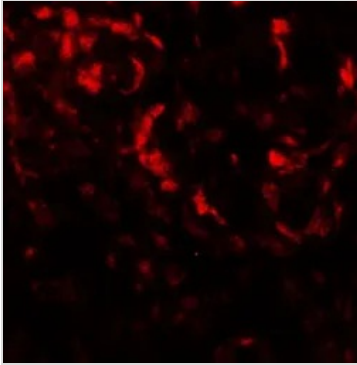
For full product information, images and publications, please visit our [website](#).

For laboratory research use only. Not for any clinical, therapeutic, or diagnostic use in humans or animals. Not for animal or human consumption.

Note

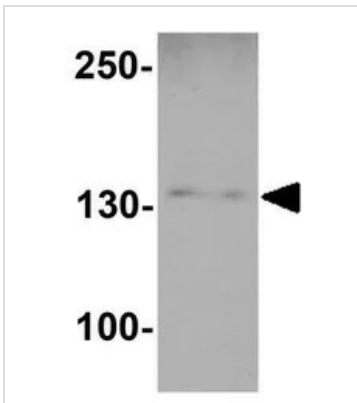
Purchasers shall not, and agree not to enable third parties to, analyze, copy, reverse engineer or otherwise attempt to determine the structure or sequence of the product.

DATA IMAGES



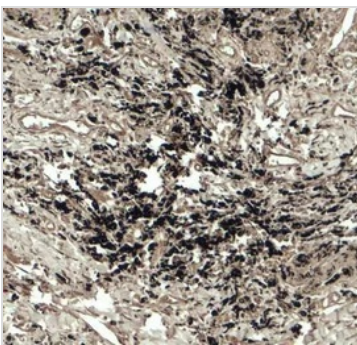
GTx32141 IHC-P Image

IHC-P analysis of human lung carcinoma tissue using GTx32141 Beclin 2 antibody.
Working concentration : 20 µg/ml



GTx32141 WB Image

WB analysis of Jurkat cell lysate in (A) the absence and (B) the presence of blocking peptide using GTx32141 Beclin 2 antibody.
Working concentration : 1 µg/ml



GTx32141 IHC-P Image

IHC-P analysis of human lung carcinoma tissue using GTx32141 Beclin 2 antibody.
Working concentration : 5 µg/ml



For full product information, images and publications, please visit our [website](#).