

SLC29A2 antibody

Cat. No. GTX32150

Host	Rabbit
Clonality	Polyclonal
Isotype	IgG
Applications	WB, IHC-P, ELISA
Reactivity	Human

Package
100 µg

Applications

Application Note

*Optimal dilutions/concentrations should be determined by the researcher.

Suggested dilution	Recommended dilution
WB	1 - 2 µg/mL
IHC-P	2.5 µg/mL
ELISA	Assay dependent

Not tested in other applications.

Calculated MW 50 kDa. ([Note](#))

Product Note SLC29A2 antibody is human specific. SLC29A2 antibody is predicted to not cross-react with other SLC29 proteins.

Properties

Form	Liquid
Buffer	PBS
Preservative	0.02% Sodium azide
Storage	Store as concentrated solution. Centrifuge briefly prior to opening vial. For short-term storage (1-2 weeks), store at 4°C. For long-term storage, aliquot and store at -20°C or below. Avoid multiple freeze-thaw cycles.
Concentration	1 mg/ml (Please refer to the vial label for the specific concentration.)
Immunogen	SLC29A2 antibody was raised against a 19 amino acid peptide near the center of human SLC29A2. The immunogen is located within amino acids 250 - 300 of SLC29A2.
Purification	Purified by antigen-affinity chromatography
Conjugation	Unconjugated



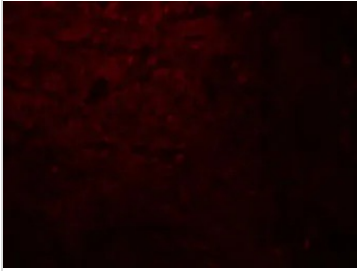
For full product information, images and publications, please visit our [website](#).

For laboratory research use only. Not for any clinical, therapeutic, or diagnostic use in humans or animals. Not for animal or human consumption.

Note

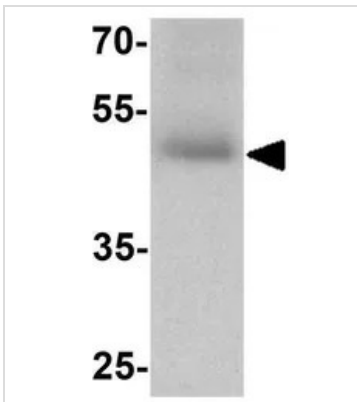
Purchasers shall not, and agree not to enable third parties to, analyze, copy, reverse engineer or otherwise attempt to determine the structure or sequence of the product.

DATA IMAGES



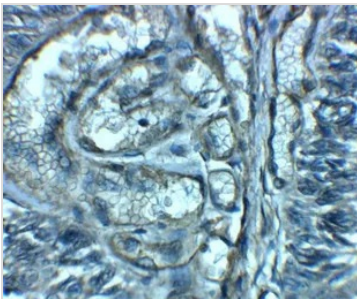
GTX32150 IHC-P Image

IHC-P analysis of human bladder tissue using GTX32150 SLC29A2 antibody.
Working concentration : 20 µg/ml



GTX32150 WB Image

WB analysis of human bladder tissue lysate using GTX32150 SLC29A2 antibody.
Working concentration : 1 µg/ml



GTX32150 IHC-P Image

IHC-P analysis of human bladder tissue using GTX32150 SLC29A2 antibody.
Working concentration : 2.5 µg/ml



For full product information, images and publications, please visit our [website](#).