

## RSPO3 antibody

Cat. No. GTX32155

Host	Rabbit
Clonality	Polyclonal
Isotype	IgG
Applications	WB, ICC/IF, ELISA
Reactivity	Human, Mouse

References ( 1 )

Package

100 µg

## Applications

## Application Note

\*Optimal dilutions/concentrations should be determined by the researcher.

Suggested dilution	Recommended dilution
WB	1 - 2 µg/mL
ICC/IF	5 µg/mL
ELISA	Assay dependent

Not tested in other applications.

Calculated MW 31 kDa. ( [Note](#) )

Product Note At least three isoforms of RSPO3 are known to exist; this antibody will detect all three.

## Properties

Form	Liquid
Buffer	PBS
Preservative	0.02% Sodium azide
Storage	Store as concentrated solution. Centrifuge briefly prior to opening vial. For short-term storage (1-2 weeks), store at 4°C. For long-term storage, aliquot and store at -20°C or below. Avoid multiple freeze-thaw cycles.
Concentration	1 mg/ml (Please refer to the vial label for the specific concentration.)
Immunogen	RSPO3 antibody was raised against a 19 amino acid peptide near the carboxy terminus of human RSPO3. The immunogen is located within amino acids 200 - 250 of RSPO3.
Purification	Purified by antigen-affinity chromatography
Conjugation	Unconjugated



For full product information, images and publications, please visit our [website](#).

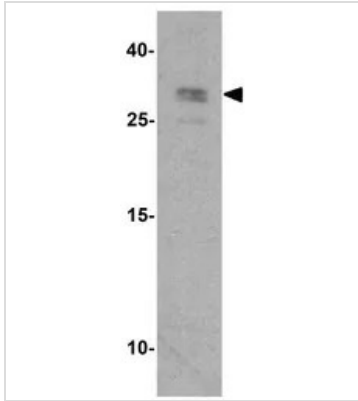
Date 2026 / 01 / 06 Page 1 of 2

For laboratory research use only. Not for any clinical, therapeutic, or diagnostic use in humans or animals. Not for animal or human consumption.

**Note**

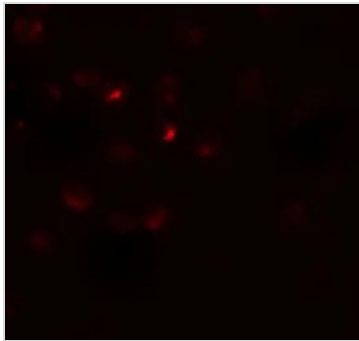
Purchasers shall not, and agree not to enable third parties to, analyze, copy, reverse engineer or otherwise attempt to determine the structure or sequence of the product.

## DATA IMAGES



### GTx32155 WB Image

WB analysis of 293 cell lysate using GTx32155 RSPO3 antibody.  
Working concentration : 1 µg/ml



### GTx32155 ICC/IF Image

ICC/IF analysis of 293 cells using GTx32155 RSPO3 antibody.  
Working concentration : 20 µg/ml



### GTx32155 ICC/IF Image

ICC/IF analysis of 293 cells using GTx32155 RSPO3 antibody.  
Working concentration : 5 µg/ml



For full product information, images and publications, please visit our [website](#).