

## Trophinin antibody

Cat. No. GTX32161

Host	Rabbit
Clonality	Polyclonal
Isotype	IgG
Applications	WB, IHC-P, ELISA
Reactivity	Human, Mouse, Rat

Package  
100 µg

## Applications

## Application Note

\*Optimal dilutions/concentrations should be determined by the researcher.

Suggested dilution	Recommended dilution
WB	1 - 2 µg/mL
IHC-P	10 µg/mL
ELISA	Assay dependent

Not tested in other applications.

Calculated MW 144 kDa. ([Note](#))

## Properties

Form	Liquid
Buffer	PBS
Preservative	0.02% Sodium azide
Storage	Store as concentrated solution. Centrifuge briefly prior to opening vial. For short-term storage (1-2 weeks), store at 4°C. For long-term storage, aliquot and store at -20°C or below. Avoid multiple freeze-thaw cycles.
Concentration	1 mg/ml (Please refer to the vial label for the specific concentration.)
Immunogen	Trophinin antibody was raised against a 16 amino acid peptide near the amino terminus of human Trophinin. The immunogen is located within amino acids 390 - 440 of Trophinin.
Purification	Purified by antigen-affinity chromatography
Conjugation	Unconjugated

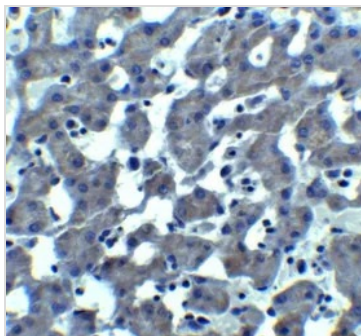
## Note

For laboratory research use only. Not for any clinical, therapeutic, or diagnostic use in humans or animals. Not for animal or human consumption.

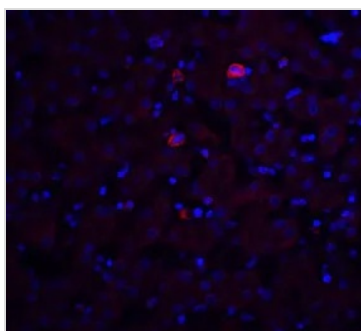
Purchasers shall not, and agree not to enable third parties to, analyze, copy, reverse engineer or otherwise attempt to determine the structure or sequence of the product.



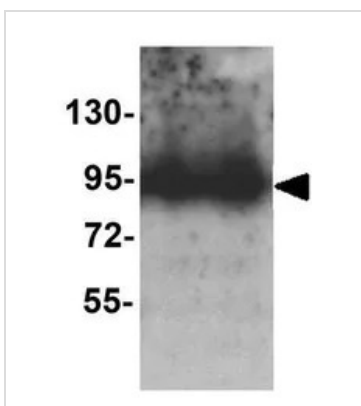
For full product information, images and publications, please visit our [website](#).

**DATA IMAGES**

**GTX32161 IHC-P Image**

IHC-P analysis of mouse liver tissue using GTX32161 Trophinin antibody.  
Working concentration : 10 µg/ml


**GTX32161 IHC-P Image**

IHC-P analysis of mouse liver tissue using GTX32161 Trophinin antibody.  
Working concentration : 20 µg/ml


**GTX32161 WB Image**

WB analysis of rat liver tissue lysate using GTX32161 Trophinin antibody.  
Working concentration : 1 µg/ml



For full product information, images and publications, please visit our [website](https://www.genetex.com).