

ICAM1 / CD54 (phospho Tyr512) antibody

Cat. No. GTX32196

Host	Rabbit
Clonality	Polyclonal
Isotype	IgG
Applications	WB, ICC/IF
Reactivity	Human

References (1)

Package

100 µl

Applications

Application Note

*Optimal dilutions/concentrations should be determined by the researcher.

Suggested dilution	Recommended dilution
WB	1:500 - 1:1000
ICC/IF	Assay dependent

Not tested in other applications.

Calculated MW	58 kDa. (Note)
Observed MW (kDa)	58 or 85~110 kDa. The observed M.W. is based on the following publication. PMID: 24474243

Properties

Form	Liquid
Buffer	0.42% Potassium Phosphate, 0.87% NaCl, 30% Glycerol
Preservative	0.01% Sodium azide
Storage	Store as concentrated solution. Centrifuge briefly prior to opening vial. For short-term storage (1-2 weeks), store at 4°C. For long-term storage, aliquot and store at -20°C or below. Avoid multiple freeze-thaw cycles.
Concentration	Batch dependent (Please refer to the vial label for the specific concentration.)
Immunogen	KLH-conjugated synthetic peptide encompassing a sequence within the C-term region of ICAM1 / CD54. The exact sequence is proprietary.
Purification	Purified by antigen-affinity chromatography
Conjugation	Unconjugated

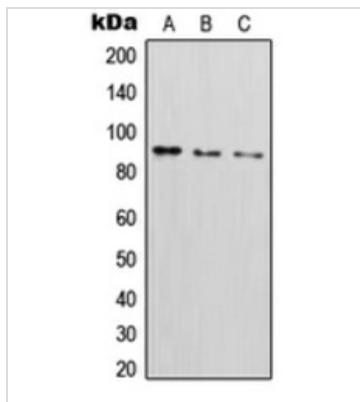
Note

For laboratory research use only. Not for any clinical, therapeutic, or diagnostic use in humans or animals. Not for animal or human consumption.

Purchasers shall not, and agree not to enable third parties to, analyze, copy, reverse engineer or otherwise attempt to determine the structure or sequence of the product.

For full product information, images and publications, please visit our [website](#).

DATA IMAGES



GTX32196 WB Image

WB analysis of Saos2 (A), TNFα-treated HepG2 (B), Raji (C) whole cell lysates using GTX32196 ICAM1 / CD54 (phospho Tyr512) antibody.



For full product information, images and publications, please visit our [website](https://www.genetex.com).