

## SLP76 (phospho Tyr128) antibody

**Cat. No. GTX32209**

<b>Host</b>	Rabbit
<b>Clonality</b>	Polyclonal
<b>Isotype</b>	IgG
<b>Applications</b>	WB
<b>Reactivity</b>	Human, Mouse, Rat

**Package**  
100 µl

## Applications

**Application Note**

\*Optimal dilutions/concentrations should be determined by the researcher.

Suggested dilution	Recommended dilution
WB	1:500 - 1:1000

Not tested in other applications.

**Calculated MW** 60 kDa. ( [Note](#) )

## Properties

<b>Form</b>	Liquid
<b>Buffer</b>	0.42% Potassium Phosphate, 0.87% NaCl, 30% Glycerol
<b>Preservative</b>	0.01% Sodium azide
<b>Storage</b>	Store as concentrated solution. Centrifuge briefly prior to opening vial. For short-term storage (1-2 weeks), store at 4°C. For long-term storage, aliquot and store at -20°C or below. Avoid multiple freeze-thaw cycles.
<b>Concentration</b>	Batch dependent (Please refer to the vial label for the specific concentration.)
<b>Immunogen</b>	KLH-conjugated synthetic peptide encompassing a sequence within the center region of SLP76. The exact sequence is proprietary.
<b>Purification</b>	Purified by antigen-affinity chromatography
<b>Conjugation</b>	Unconjugated

**Note**

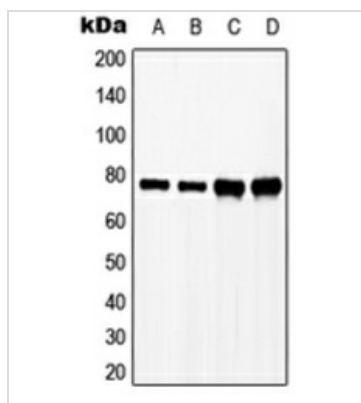
For laboratory research use only. Not for any clinical, therapeutic, or diagnostic use in humans or animals. Not for animal or human consumption.

Purchasers shall not, and agree not to enable third parties to, analyze, copy, reverse engineer or otherwise attempt to determine the structure or sequence of the product.



For full product information, images and publications, please visit our [website](#).

## DATA IMAGES



### GTX32209 WB Image

WB analysis of H<sub>2</sub>O<sub>2</sub>-treated HeLa (A), Jurkat (B), H<sub>2</sub>O<sub>2</sub>-treated Raw264.7 (C), H<sub>2</sub>O<sub>2</sub>-treated PC12 (D) whole cell lysates using GTX32209 SLP76 (phospho Tyr128) antibody.



For full product information, images and publications, please visit our [website](https://www.genetex.com).