

Src (phospho Tyr530) antibody

Cat. No. GTX32265

Host	Rabbit
Clonality	Polyclonal
Isotype	IgG
Applications	WB, IHC-P
Reactivity	Human

Package
100 µl

Applications

Application Note

*Optimal dilutions/concentrations should be determined by the researcher.

Suggested dilution	Recommended dilution
WB	1:500 - 1:1000
IHC-P	1:100 - 1:200

Not tested in other applications.

Calculated MW 60 kDa. ([Note](#))

Product Note

This antibody is raised against human Src phosphorylated at Tyr530. Based on sequence homology, it is predicted to react with chicken Src phosphorylated at Tyr527, and it may cross with other Src family members such as YES1 and FYN proteins when phosphorylated at the equivalent sites. Based on sequence homology, this antibody may cross with other Src family members such as YES1, FYN proteins when phosphorylated at the equivalent sites.

Properties

Form	Liquid
Buffer	0.42% Potassium Phosphate, 0.87% NaCl, 30% Glycerol
Preservative	0.01% Sodium azide
Storage	Store as concentrated solution. Centrifuge briefly prior to opening vial. For short-term storage (1-2 weeks), store at 4°C. For long-term storage, aliquot and store at -20°C or below. Avoid multiple freeze-thaw cycles.
Concentration	Batch dependent (Please refer to the vial label for the specific concentration.)
Immunogen	KLH-conjugated synthetic peptide encompassing a sequence within the C-term region of human c-SRC. The exact sequence is proprietary. The Tyr529 of human Src is equivalent to Tyr527 of chicken Src.
Purification	Purified by antigen-affinity chromatography
Conjugation	Unconjugated



For full product information, images and publications, please visit our [website](#).

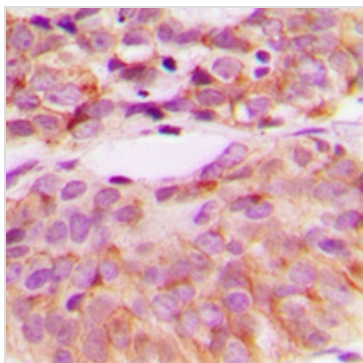
Date 2025 / 12 / 27 Page 1 of 2

For laboratory research use only. Not for any clinical, therapeutic, or diagnostic use in humans or animals. Not for animal or human consumption.

Note

Purchasers shall not, and agree not to enable third parties to, analyze, copy, reverse engineer or otherwise attempt to determine the structure or sequence of the product.

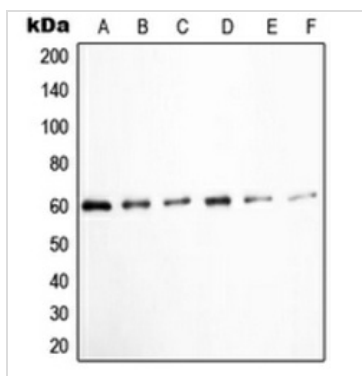
DATA IMAGES



GTX32265 IHC-P Image

IHC-P analysis of formalin fixed human breast cancer tissue section using GTX32265 Src (phospho Tyr527) antibody.

Antigen retrieval : Heat mediated antigen retrieval with sodium citrate buffer (pH 6.0)



GTX32265 WB Image

WB analysis of K562 (A), HUVEC (B), Jurkat (C), COLO205 (D), EGF-treated HEK293T (E), pervanadate-treated A431 (F) whole cell lysates using GTX32265 Src (phospho Tyr527) antibody.



For full product information, images and publications, please visit our [website](https://www.genetex.com).