

Vimentin (phospho Ser56) antibody

Cat. No. GTX32278

Host	Rabbit
Clonality	Polyclonal
Isotype	IgG
Application	WB
Reactivity	Human, Mouse, Rat

Package
100 µl

APPLICATION

Application Note

*Optimal dilutions/concentrations should be determined by the researcher.

Suggested dilution	Recommended dilution
WB	1:500 - 1:1000
Not tested in other applications.	

Calculated MW 54 kDa. ([Note](#))

PROPERTIES

Form	Liquid
Buffer	0.42% Potassium Phosphate, 0.87% NaCl, 30% Glycerol
Preservative	0.01% Sodium azide
Storage	Store as concentrated solution. Centrifuge briefly prior to opening vial. For short-term storage (1-2 weeks), store at 4°C. For long-term storage, aliquot and store at -20°C or below. Avoid multiple freeze-thaw cycles.
Concentration	Batch dependent (Please refer to the vial label for the specific concentration.)
Immunogen	KLH-conjugated synthetic peptide encompassing a sequence within the N-term region of Vimentin. The exact sequence is proprietary.
Purification	Purified by antigen-affinity chromatography
Conjugation	Unconjugated

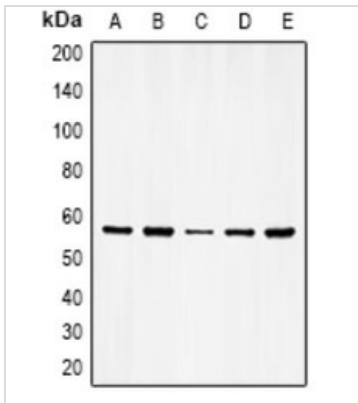
Note

For laboratory research use only. Not for any clinical, therapeutic, or diagnostic use in humans or animals. Not for animal or human consumption.

Purchasers shall not, and agree not to enable third parties to, analyze, copy, reverse engineer or otherwise attempt to determine the structure or sequence of the product.



For full product information, images and publications, please visit our [website](#).

DATA IMAGES

GTx32278 WB Image

WB analysis of UV-treated MCF7 (A), A10 (B), KNRK (C), UV-treated NIH3T3 (D), UV-treated H9C2 (E) whole cell lysates using GTx32278 Vimentin (phospho Ser56) antibody.



For full product information, images and publications, please visit our [website](https://www.genetex.com).