

## p21 Cip1 (phospho Thr145) antibody

Cat. No. GTX32376

Host	Rabbit
Clonality	Polyclonal
Isotype	IgG
Applications	WB, ICC/IF, IHC-P
Reactivity	Human, Mouse

References ( 1 )

Package

100 µl

## Applications

## Application Note

\*Optimal dilutions/concentrations should be determined by the researcher.

Suggested dilution	Recommended dilution
WB	1:500 - 1:1000
ICC/IF	1:100 - 1:500
IHC-P	1:100 - 1:200

Not tested in other applications.

Calculated MW 18 kDa. ( [Note](#) )

## Properties

Form	Liquid
Buffer	0.42% Potassium Phosphate, 0.87% NaCl, 30% Glycerol
Preservative	0.01% Sodium azide
Storage	Store as concentrated solution. Centrifuge briefly prior to opening vial. For short-term storage (1-2 weeks), store at 4°C. For long-term storage, aliquot and store at -20°C or below. Avoid multiple freeze-thaw cycles.
Concentration	Batch dependent (Please refer to the vial label for the specific concentration.)
Immunogen	KLH-conjugated synthetic peptide encompassing a sequence within the C-term region of p21 Cip1. The exact sequence is proprietary.
Purification	Purified by antigen-affinity chromatography
Conjugation	Unconjugated

## Note

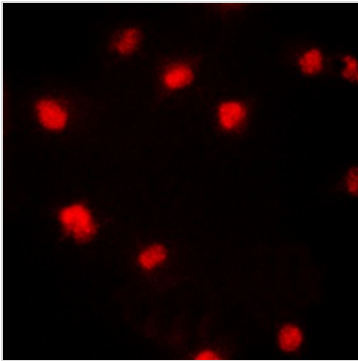
For laboratory research use only. Not for any clinical, therapeutic, or diagnostic use in humans or animals. Not for animal or human consumption.

Purchasers shall not, and agree not to enable third parties to, analyze, copy, reverse engineer or otherwise attempt to determine the structure or sequence of the product.



For full product information, images and publications, please visit our [website](#).

## DATA IMAGES



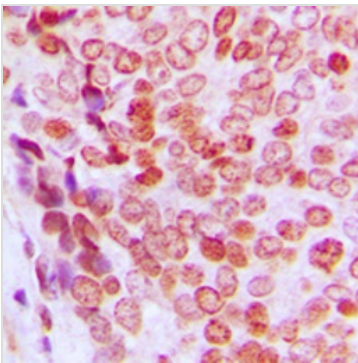
### GTX32376 ICC/IF Image

ICC/IF analysis of formalin-fixed HeLa cells using GTX32376 p21 Cip1 (phospho Thr145) antibody.

Red : Primary antibody

Blue : DAPI

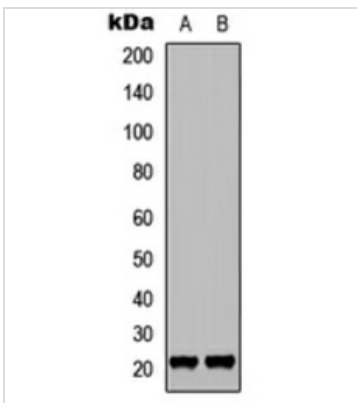
Permeabilization : 0.1% Triton X-100 in TBS for 5-10 minutes



### GTX32376 IHC-P Image

IHC-P analysis of formalin fixed human prostate cancer tissue section using GTX32376 p21 Cip1 (phospho Thr145) antibody.

Antigen retrieval : Heat mediated antigen retrieval with sodium citrate buffer (pH 6.0)



### GTX32376 WB Image

WB analysis of EGF-treated HT1080 (A), EGF-treated HeLa (B) whole cell lysates using GTX32376 p21 Cip1 (phospho Thr145) antibody.



For full product information, images and publications, please visit our [website](https://www.genetex.com).