

EGFR (phospho Tyr1045) antibody

Cat. No. GTX32386

Host	Rabbit
Clonality	Polyclonal
Isotype	IgG
Applications	WB
Reactivity	Human

Package
100 µl

Applications

Application Note

*Optimal dilutions/concentrations should be determined by the researcher.

Suggested dilution	Recommended dilution
WB	1:500 - 1:1000

Not tested in other applications.

Calculated MW 134 kDa. ([Note](#))

Product Note The full-length EGFR includes the 24 aa signal peptide that is cleaved during EGFR maturation. The Tyr1045 of mature EGFR is equivalent to Tyr1069 of uncleaved EGFR.

Properties

Form	Liquid
Buffer	0.42% Potassium Phosphate, 0.87% NaCl, 30% Glycerol
Preservative	0.01% Sodium azide
Storage	Store as concentrated solution. Centrifuge briefly prior to opening vial. For short-term storage (1-2 weeks), store at 4°C. For long-term storage, aliquot and store at -20°C or below. Avoid multiple freeze-thaw cycles.
Concentration	Batch dependent (Please refer to the vial label for the specific concentration.)
Immunogen	KLH-conjugated synthetic peptide encompassing a sequence within the C-term region of human EGFR (pY1045). The exact sequence is proprietary.
Purification	Purified by antigen-affinity chromatography
Conjugation	Unconjugated

Note

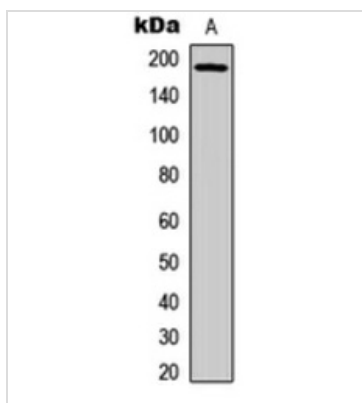
For laboratory research use only. Not for any clinical, therapeutic, or diagnostic use in humans or animals. Not for animal or human consumption.

Purchasers shall not, and agree not to enable third parties to, analyze, copy, reverse engineer or otherwise attempt to determine the structure or sequence of the product.



For full product information, images and publications, please visit our [website](#).

DATA IMAGES



GTX32386 WB Image

WB analysis of UV-treated HEK293T (A) whole cell lysates using GTX32386 EGFR (phospho Tyr1045) antibody.



For full product information, images and publications, please visit our [website](https://www.genetex.com).